

FREE

Yorkshire Reporter®

JUNE 2024

Your Local Monthly Newspaper

Leeds Summer Of Events



See Pages 16-17

Free alongside this paper every month @your fingertips magazine (WHILE STOCKS LAST!)

Keep it handy for all your local trades and businesses



Yorkshire Water Launches Near Real-Time Storm Overflow Map

SEE PAGE 6



CMA Presses Ahead With Full Investigation Into Vets Market

SEE PAGE 20

saso

MOBILITY COMFORT



Extra Discount Voucher

£100 OFF

Any purchase of a Lift and Tilt Recliner Chair Or Adjustable Bed one voucher per customer only. Discount can't be used in conjunction with any other offer...



saso.co.uk | 01977 559979 | Calder House Savile Road, Castleford WF10 1BJ | FREE PARKING

CHRISTOPHER BROWN

PART OF BROWN & GOLD LTD

GOLD PRICES HIT

RECORD HIGH!



SELL YOUR

GOLD

OR USE IT TO BORROW CASH

See page 13



Welcome to the Yorkshire Reporter

Now in our 11th year of bringing you the largest independent, free to pick up monthly newspaper in West Yorkshire, we are confident that inside you will find local news and stories relevant to you and your community, along with a wide range of interesting columns and features.

As a family owned business, we pride ourselves on supporting local community groups and businesses. With our team, you can be certain of a personal and professional service, so if you have something going on in your community that you want to shout about, or are thinking of advertising with us, please get in touch.

Lesley Ann, Editor

Contact us;

0113 51 333 56

Pickup Publications Ltd

Company No: 8476679

Opening Times:

Mon - Fri 09:00 - 17:30 & Sat 09:00 - 13:00

Advertising;

Offering a professional and friendly service

Email;

advertising@yorkshirereporter.co.uk

Public Notices, Operators Licences;

Very competitive rates

Email;

brian@yorkshirereporter.co.uk

News;

Have a local news story to share?

Email;

newsdesk.ids@yorkshirereporter.co.uk

What's inside your paper



Get help to buy food and milk with the NHS Healthy Start Scheme

Apply online at www.healthystart.nhs.uk

SEE INSIDE: Page 23

MUSIC



The Music Scene

SEE INSIDE: Page 14

MOTORS



THE NEW CONTINENTAL GT IS COMING

SEE INSIDE: Page 18

NEWS

- MAYOR PARTNERS WITH PRIVATE FIRMS TO ACCELERATE TRANSITION TO NET ZERO **SEE INSIDE: Page 4**
- ABIGAIL MARSHALL KATUNG BECOMES 130TH LORD MAYOR OF LEEDS **SEE INSIDE: Page 5**
- DON'T BUY RHODODENDRON PONTICUM AS IT'S DESTROYING OUR NATIVE WILDLIFE, WARNS WOODLAND TRUST **SEE INSIDE: Page 11**
- THE RVC'S VETCOMPASS PROGRAMME REVEALS THE DOG BREEDS AT MOST AND LEAST RISK OF TICK INFESTATION **SEE INSIDE: Page 21**
- NEW DENTISTS REQUIRED TO DELIVER NHS CARE UNDER GOVERNMENT PLANS **SEE INSIDE: Page 24**

WEST YORKSHIRE'S LARGEST MONTHLY INDEPENDENT FREE TO PICK UP NEWSPAPER

Available **FREE** to pick up from many selected supermarkets;



Sainsbury's Local

Also available **FREE** to pick up from selected;



Costcutter

Boston Spa High St

Nisa local

Garforth Main Street, St Lane Roundhay, Easterly Road & Crossgates Road



Londis

High Street Kippax



Tailor Made
Hope Street, Morley



Hunslet, Oakwood, Killingbeck & Colton



www.yorkshirereporter.co.uk

Fish Restaurants

- Oceans - Cross Gates
- Murgatroyds Fish Restaurant - Yeadon
- Skyliner Fish Restaurant - Colton
- Coes - Cross Gates
- Key Fisheries - York Road
- Hiltons Fish & Chips - Garforth
- Wetherby Whaler - Guiseley
- Wetherby Whaler - Wetherby
- Wetherby Whaler - Pudsey
- Portside Fisheries - Harrogate Rd
- Wolsey Fisheries - Sherburn In Elmet Cove - Horsforth
- The Hook - Aberford Road Garforth

Wetherby Newsagent's
20 Market Pl, Wetherby
Alwoodley News
The Avenue LS17

Garden Centres

Langlands A64, Garforth Garden Centre, Selby Rd, The Arium, Thorner & Lumby Garden Centre & Coffee Shop, South Milford

FREE Yorkshire Reporter
Your Local Monthly Newspaper

AVAILABLE FROM OVER 600 OUTLETS EVERY MONTH

Distributed throughout Leeds & surrounding areas

Bringing you local news, stories & features plus much much more for over 10 years



■ Receiving the Northern Housing Team of the Year Award 2024 from Steve Gayter (centre), Executive Director from Novus who sponsored the category, are (from left to right) Sue Pennock, Kelly Jennings, Lorraine Charlton, Sean Kelly and Cedric Boston



Unity Wins Team Of The Year At Northern Housing Awards

Unity Homes and Enterprise has achieved a remarkable feat in winning the Team of the Year prize at the Northern Housing Awards 2024.

The BME housing association's Employment Services and Enterprise team triumphed over eight other shortlisted finalists from across the north of England to scoop the highly coveted accolade at a ceremony in Manchester.

Founded in 1987, Unity manages over 1,386 affordable properties for tenants from all communities and ethnic backgrounds in Leeds and Kirklees.

Working alongside housing officers, the Employment Services and Enterprise team helps people in hard-to-reach communities to access jobs and training. They also assist those already in work to boost their career prospects by gaining new skills including how to set up and run their own business.

In the last financial year, the team helped 198 people to find jobs, 256 people to improve their skills and employability through training and 15 people to enter voluntary work.

The team also operates three enterprise centres including Leeds Media Centre which recently underwent a £1.8 million upgrade in partnership with Leeds City Council and the European Regional Development Fund.

Collectively the centres provide 142 affordable units for more than 80 diverse businesses employing over 900 people.

Cedric Boston, Unity Homes and Enterprise Chief Executive, said:

"I am incredibly proud of the team's achievement which is thoroughly merited.

"Being shortlisted for this prestigious award was a great success in itself.

"To win it in the face of such stiff competition from housing associations many times bigger than ourselves is outstanding.

"I want to congratulate every member of the small but immensely talented team who work hard every single day to change people's lives for the better.

"They are a credit to themselves and to Unity."

Adrian Green, Unity Enterprise Manager, said:

"It has been a rollercoaster year with the redevelopment of Leeds Media Centre including a brand new hi-tech business hub.

"That has placed us in a perfect position to devise a series of exciting enterprise focused initiatives with a number already being rolled out.

"Winning Team of the Year at the Northern Housing Awards is the best possible catalyst towards future success."

Development Boost For Prominent Site In Leeds South Bank

Development plans for a key gateway site in the heart of Leeds South Bank have taken a significant step forward.

Leeds City Council made the vacant 0.18-hectare plot at Meadow Lane available for purchase last year as part of its efforts to drive regeneration activity across the South Bank.

Now the council can confirm that property company Glenbrook has been chosen as the preferred bidder for the site.

Subject to the award of planning permission and the full conclusion of the sale, it will be brought forward by Glenbrook as a high-quality residential scheme that will include affordable housing.

The site was created as part of a recent transformation of Meadow Lane by the council that involved the reconfiguration of the highway, the removal of the old Hunslet Lane surface car park and the laying out of attractive green space.

The new building would, it is anticipated, complement existing landmarks such as the David Oluwale Bridge and the Hibiscus Rising sculpture, and also act as an impressive linking point between the nearby Aire Park development and the rest of the city centre.

The sale would generate a substantial capital receipt for the council, which is currently facing unprecedented budget pressures.

Councillor James Lewis, leader of Leeds City Council, said:

"We're determined to do whatever we can to help unlock major residential and commercial developments, including new affordable housing, across the South Bank and the rest of the city centre.

"The value of such an approach is underlined by the new use planned for this prime piece of land, which was opened up for potential purchase and development as part of our work to regenerate Meadow Lane and the surrounding area."

The site was marketed for the council by the Leeds office of global real estate firm Cushman and Wakefield.

Running along the southern side of the River Aire, Leeds South Bank covers the equivalent of 350 football pitches.

Ongoing regeneration activity in the area spearheaded by the council should, when complete, deliver 35,000 jobs and 8,000 new homes.



UNBEATABLE VALUE ELECTRIC GARAGE DOORS

- ✓ FREE installation
- ✓ FREE 5 year warranty
- ✓ Manufactured in the UK
- ✓ Fitted by a local Garolla engineer
- ✓ The UK's No.1 recommended

GAROLLA
ELECTRIC GARAGE DOORS

Checkatrade
9.8 out of 10

★ Trustpilot
★★★★★
4.7 out of 5

BOOK A FREE SURVEY TODAY

0113 347 0448

GAROLLA.CO.UK

*Terms & conditions apply, see website for details. Offer extended until 31st August.

People Facing Barriers To Employment Will Benefit From A £10 Million Package To Help Them Get The Skills They Need To Secure Well-Paid Work

The Mayor of West Yorkshire, Tracy Brabin has announced a £10 million package to “make life easier for those who find it the hardest”.

This funding will help those struggling to secure good jobs because of their age, health condition, disability, or difficult personal circumstances.

It follows a high-profile election pledge to build a “region of learning and creativity” for all, where everyone in the region is spurred on to follow their passions in life, and lifted up to reach their full potential.

Those set to benefit from six new projects include single parents, people with low digital skills, people who have faced discrimination because of their ethnicity, and people with criminal convictions.

Mayor of West Yorkshire, Tracy Brabin, said:

“There are too many people at a disadvantage when it comes to finding and keeping work, so I’m delighted to get these new initiatives off the ground as part of our focus on a region of learning.

“I want everyone in West Yorkshire to have the skills and opportunities they need to succeed, regardless of their personal circumstances.

“Providing tailored support for people to smash down the barriers they face will help us to grow our economy and build a stronger, brighter West Yorkshire that works for all.”

Part-funded by the UK Government through the UK Shared Prosperity Fund, the six new initiatives aim to reduce inequalities, raise living standards, and grow the economy, while boosting confidence, skills and knowledge throughout the communities of West Yorkshire.

The projects are:

- An innovative pilot between Bradford Council, and local community and outpatient health services, supporting stroke patients receive extra rehabilitation for people with long COVID to help them return to work, while the businesses they work for will receive tailored support to better accommodate their return to the workplace.
- Stepping Stones, an initiative which will provide free access to much loved “community shops” in Leeds, Bradford and Wakefield. Once there, people will be able to buy discounted food and groceries, as well as access grants to pay for expenses like travel and childcare, while they undertake a supportive programme designed to help them humanely back into work.
- Grant funding will be available for voluntary and community organisations, in order to tap into their extensive local knowledge and relationships with vulnerable people, to ensure the support gets to those who need it the most.
- Two projects are being launched by The Education Development Trust: Future Forward, designed to support 16–24-year-olds into employment or further education, and Pathways to Progress, a work and health programme aiming to break down the health barriers to employment.
- Kirklees Council’s project will help people facing health-related barriers to employment, with specialised training set to be provided to frontline staff.

To learn more about business and skills in West Yorkshire visit:

www.wybusiness-skills.com

Aldi Hiring In Yorkshire

Aldi, Britain’s fourth-largest supermarket is on the lookout for people of all levels of experience to fill 200 roles across the Yorkshire region, including full and part-time positions.

The recruitment push comes as Aldi increased hourly pay rates for all its store colleagues across the UK which saw the hourly rate of Store Assistants nationally rise from £12.00 to £12.40, and from £13.55 to £13.65 for those within the M25.

This marked the second pay increase for Aldi store colleagues this year and took the supermarket’s investment in pay this year to £79m.

It means Aldi continues to offer the best hourly rates in the sector. The supermarket also remains the only one to provide paid breaks, which is worth more than £900 a year for the average store colleague.

Those interested in applying for a career with Aldi can visit www.aldirecruitment.co.uk



■ Tracy Brabin & Neil Kirkby, MD at SSE

Mayor Partners With Private Firms To Accelerate Transition To Net Zero

West Yorkshire is set to become greener and quicker thanks to a groundbreaking new partnership between the public and the private sector.

The West Yorkshire Strategic Climate and Environment Partnership was announced at the major international investor conference, UKREiiF. It will see the re-elected West Yorkshire Mayor team up with four major private sector firms to accelerate delivery of the region’s net zero plans.

The companies will work alongside the Mayor on targeted activity to deliver green skills, decarbonise homes and businesses, and put the region on the path to net zero carbon by 2038. In return, the firms will benefit from the Mayor and Combined Authority’s influence and leadership on climate and the environment, giving them the confidence to invest in West Yorkshire at scale.

Tracy Brabin, Mayor of West Yorkshire, said:

“During my first term, I was proud to invest over £200 million in green projects. Working with partners, we insulated social homes, match-funded businesses to green their processes, put electric buses on our roads, and provided direct grants to communities to lower their carbon footprint.

“But we will not deliver net zero without bringing the private sector with us. This groundbreaking new partnership will help us become greener, quicker and deliver net zero at scale and at speed, cutting energy bills in a cost of living crisis, and building a brighter region for future generations.”

The four firms which make up the new climate partnership with the Mayor are:

- Centrica, the owner of British Gas and energy supplier to over 10 million homes and businesses
- Daikin, the multinational heating and cooling manufacturer
- SSE, the leading clean energy company
- Sustainable Building Services, one of the UKs largest retrofitters of homes.

Dan Rosenfield, Managing Director of Centrica Net Zero, said:

“Helping people live smarter, greener lives requires strong collaboration and partnerships. We’re delighted to work with West Yorkshire Combined Authority to support their net zero journey.

“Our purpose is to energise a greener, fairer future. We will work collaboratively with WYCA and other partners to help make net zero simple and affordable, utilising our Hive smart energy system and inhouse expertise.”

Hiro Ishikawa, Managing Director of Daikin UK, said:

“Daikin is delighted to be a strategic partner of the West Yorkshire Strategic Climate & Environment Partnership.

“Switching to sustainable energy is critical to meeting net zero targets, and our heat pump solutions will help make homes greener, warmer, and more energy-efficient. This exciting new partnership means we will work together to support the region in its vital decarbonisation goals.

“We look forward to working closely with communities and wider stakeholders to develop and upskill the West Yorkshire region, and support the low-carbon transition.

Neil Kirkby, Managing Director of Enterprise at SSE Energy Solutions, said:

“Our agreement to work closely with the West Yorkshire Combined Authority (WYCA) is further evidence of SSE’s commitment to engaging with local communities to ensure a fair transition to a sustainable future. Our expertise in decarbonisation and renewable energy together with the WYCA’s ambition to play its part in tackling climate change has enormous

potential to drive change and this collaboration is one that can be replicated with regions throughout the UK and Ireland.

“At SSE we are investing in the communities where we operate, driving local economic growth, and working to unlock the potential of low-carbon technologies. If we can foster the development of a skilled green workforce, we will build a cleaner, greener future for generations to come.”

Derek Horrocks, Owner of Sustainable Building Services (UK) Ltd, said:

“We are absolutely delighted to have been selected by The West Yorkshire Strategic Climate and Environment Partnership as one of the four major private firms to come together with them to form this ground breaking Public/Private strategic partnership to create large scale green communities with a central ethos of ‘greener quicker for future generations’ across West Yorkshire.

“We look forward to bringing our expertise to this collaboration in delivering building decarbonisation at scale and speed, alongside our wider group offering of blending private/public sector funding and vision to offer every household a financially viable solution to decarbonise their homes, alongside our extremely innovative Fintech and PropTech offerings to support the funding of solutions for all and to provide the ability to monitor and evaluate closely the outcomes of the decarbonisation interventions we install”.

To turbocharge the road to net zero, the Combined Authority will also deepen its relationship with the Green Finance Institute, Leeds Building Society, and the Energy Saving Trust.

The three organisations will advise and support the Mayor to deliver on her most recent election pledges. Mayor Brabin has promised to put in place a programme to retrofit every social home in West Yorkshire, and to set-up a retrofit “one-stop-shop” to help every household reduce their energy bills.

Leeds Building Society’s Senior Strategy Manager, Nicola Glover, will be working closely with the Mayor over the next three months to explore the financial options for West Yorkshire residents to deliver retrofit work that improves the energy efficiency of their homes and reduces their energy bills.

Andrew Greenwood, Deputy Chief Executive Officer at Leeds Building Society, said:

“We are proud to contribute Nicola’s time and expertise to simplify the finance options for greener home improvements within our heartland. We recently conducted some research which shows that 8% people don’t know where to start when considering making green improvements to their home. We hope this partnership will help to simplify the process for those considering starting any retrofit work on their home.

“Leeds Building Society is committed to an orderly transition to net zero. We were the first lender to reward buyers opting for greener homes by factoring in lower energy bill commitments into our lending decisions. Through this partnership, we hope to be able to help more people to improve the energy efficiency of their homes.”

Emma Harvey-Smith, Chief of Staff at the Green Finance Institute, said:

“Local and Combined Authorities have a deep understanding of their residents’ needs and are increasingly acknowledging the potential of partnering with the private finance sector to ensure fair access to finance for their communities.

“We are thrilled to engage in the collaboration with WYCA and Leeds Building Society to support the Better Homes Hub programme. Together, we will delve into catalytic financial models which can offer the opportunity to empower a diverse range of consumers when it comes to retrofitting their homes. This initiative stands as an exemplar of effective public-private partnerships in action.”



Abigail Marshall Katung Becomes 130th Lord Mayor Of Leeds

Councillor Abigail Marshall Katung was officially announced as the next Lord Mayor of Leeds following the council's annual general meeting.

Taking over the role from Al Garthwaite, Councillor Marshall Katung becomes the city's 130th Lord Mayor and the first person of African descent to hold the position.

Councillor Marshall Katung will be supported throughout her tenure as Lord Mayor by her husband, Nigerian Senator and Lord Mayor Consort, Senator Sunday Marshall Katung.

Councillor Marshall Katung was born in Zaria, Kaduna State, Nigeria, and arrived in the UK to study at the University of Leeds as a postgraduate student in the Politics & International Studies Department in 2000.

Following the passing of her father in 1999, who she credits as a 'profound influence' on her life and with instilling in her an ethos of 'education for service', Councillor Marshall Katung resolved to honour his legacy and study in the UK.

Transitioning from student to professional life, Councillor Marshall Katung established her own business, while also embracing the joys and responsibilities of motherhood to twin sons, who are now pursuing their own university studies.

Breaking barriers, Councillor Marshall Katung became the first African to become a ward member of Leeds City Council when in 2019, she was elected to represent the Little London and Woodhouse ward in the city centre. This is one of Leeds most culturally diverse wards where over 82 languages are spoken. She was subsequently re-elected at the 2023 elections.

Within Leeds City Council, Councillor Marshall Katung has assumed various leadership roles

These included chairing the scrutiny board for adults health and active lifestyles and the scrutiny board for infrastructure, investment and inclusive growth. She was lead member for faith and belief, chaired the hate crime strategic board and further education 14-19 years, and is a food champion.

Away from politics, Councillor Marshall Katung is an avid athlete and coach, specialising in sprinting, and serves as a governor at Leeds City College, a trustee of Age UK and Caring Together, and co-chair of the David Oluwale Memorial Association.

As is traditional, the incoming Lord Mayor has chosen a charity to champion throughout her term. Councillor Marshall Katung has chosen the Leeds Community Foundation. She chose this charity due to its wide-ranging support of small, local charities tackling critical societal inequalities such as food poverty, health inequalities, mental health, and digital inclusion, which are all causes close to her heart.

Speaking of her appointment, The Lord Mayor of Leeds, Councillor Abigail Marshall Katung said: "It is with great appreciation and humility that I embrace the privilege of becoming this great city's 130th Lord Mayor. Since arriving in Leeds in 2000, the city quickly became my cherished second home. It was not just the city where I lived, studied, and worked, it's where I chose to raise my children and become a public servant.

"My appointment as Lord Mayor has been widely celebrated in the city's African community and is a shining example of the enormous contribution international students make to UK society. As Lord Mayor of Leeds, I am committed to working tirelessly to ensure voices are heard from all areas of the city and every triumph is recognised and celebrated."

**United
Carpets & Beds**



COME & SEE OUR NEW SAMPLE AREA!

New Stock Arriving! Massive Discounts In Store!!

10% OFF

Only Available at the Crossgates Store Leeds LS15

CARPETS ONLY - EXCLUDES FITTING

NOT TO BE USED IN CONJUNCTION WITH ANY OTHER OFFER

This Yorkshire Reporter offer expires 30.06.24

- Huge choice of laminates & vinyls
- Luxury Carpet from £9.99m²
- Roll-ends from £36
- Carpet from £5.99m²

PLUS
NO DEPOSIT
UP TO
3 YEARS
INTEREST
FREE CREDIT**

1 Austhorpe Rd, Crossgates, Leeds LS15 8QR
Telephone 01132 931717

www.unitedcarpetsandbeds.com

Opening Hours: Mon-Fri 9am-6pm, Thurs late night 8am-8pm, Sat 9am-6pm, Sun 10am-4pm

f SHOP: IN STORE/ONLINE/MOBILE

★ Trustpilot ★★★★★

† Offer available on selected products. Products subject to availability. *Every carpet fitted free applies when you buy the equivalent size of our Airstep or Treadmore underlay. Stair surcharge applies. Free fitting offer does not apply to laminate, wood, vinyl flooring or grass. Stocks vary from store to store. Colours in photos may vary slightly due to print quality. United Carpets accept no responsibility for printing errors. **Terms & Conditions apply. **Interest free credit available up to 4 years, payable monthly. Based on £2000 total spend then 48 monthly payments of £41.67, equivalent to £9.62 per week. United Carpets and Beds is authorised and regulated by the Financial Conduct Authority in relation to credit broking. Minimum order applies.

**To advertise your business
with us contact;**

advertising@yorkshirereporter.co.uk

or Tel: 0113 51 333 56

Yorkshire Water Launches Near Real-Time Storm Overflow Map



Yorkshire Water Has Launched A New Interactive Map That Will Show The Operation Of Storm Overflows In Near Real Time

The map has been launched in time for 2024 bathing water season, which runs until 30 September, to provide the most up-to-date information to those intending to swim at the coast or at the River Wharfe in Ilkley, as well as people looking to find information about their local rivers.

The map will show the live status of each of Yorkshire Water's storm overflows, when they last discharged into a watercourse and for how long to provide the most up-to-date information to customers. The map will refresh at 15-minute intervals.

Storm overflows operate to relieve pressure when there are periods of heavy or prolonged rainfall, or blockages within the sewer network, to prevent sewage backing up in the system and flooding homes and gardens. They therefore operate more when it is wet and less when it is dry.

Ben Roche, director of wastewater at Yorkshire Water, said: "We're pleased to have launched our interactive map and hope it will increase transparency for our customers, who understandably are interested in the operation of overflows within their local area, and across the region.

"All of our storm overflows are featured on the map with near real-time discharge data, showing the live status of the overflow and when they last discharged to the watercourse. All the data will be available to anyone accessing the map. We have decided to launch now, ahead of the bathing water season to ensure customers are better informed about our operations in their area. The data isn't perfect and the instruments themselves can be unavailable from time to time as they are often only as reliable as the communication networks that serve some of the remote locations we have, but we are continuing to work to refine the map and our validation processes.

"The interactive map is just a small part of the work we are doing on overflows in the region. In Yorkshire, we have 2,180 overflows and we know replumbing the whole of Yorkshire is not a quick fix as it would be both significantly disruptive and costly to customers. The map shows just how big an engineering challenge this is from the vast numbers of overflows we have. But we are investing £180m by the end of April 2025 to tackle 134 of the more frequently discharging overflows. We have already completed work on some of these, have 62 projects currently being delivered or due to start in the coming months and we have made information on these proposed improvements available on our website."

The £180m investment can broadly be split into four different types of work:

- Increasing storage at Yorkshire Water's wastewater treatment works and within the sewage network.
- Separating surface water from the combined sewer system, where developments have incorrectly connected.
- Reducing groundwater infiltration into sewers.
- Changes to the operation of treatment works to improve performance further.

Ben added: "We have also submitted our 2025-2030 plan for Ofwat to approve, which outlines our largest ever environmental investment, with £1.19bn earmarked to further reduce discharges into watercourses from our network, as we continue our work to do what's right for the environment."

Details of planned investment on the wastewater network can also be found via;

www.yorkshirewater.com/environment/river-health/storm-overflow-investment

Cash Seized From Criminals Set To Be Re-Invested Into West Yorkshire Communities



Half a million pounds of cash recovered from criminals is to be re-invested into community safety projects.

Organisations across West Yorkshire are being urged to apply for the Mayor's Safer Communities Fund, which gives money seized from criminal activities to organisations that are making their area safer.

Since 2021, the fund has supported 289 projects with over £2.4 million handed to groups.

Applications for this latest share of £500,000 are open, with grants of up to £10,000 available to bid for.

The newly re-elected West Yorkshire Mayor, Tracy Brabin, is particularly encouraging organisations working to tackle the priorities of the region's Police and Crime Plan to apply.

These priorities are:

- Supporting victims and witnesses and improving criminal justice outcomes.
- Keeping people safe and building resilience.
- Safer places and thriving communities.
- Responding to multiple and complex needs.

Mayor Brabin said:

"In West Yorkshire, we're using cash seized from criminals to help make our neighbourhoods safer.

"And now, we have half a million pounds to invest back into organisations committed to making a positive change in their communities.

"If you have an idea for a project, please apply and help us build a safer, fairer, more inclusive region for everybody."

Inspectors Praise City-Wide Response To Serious Youth Violence And Criminal Exploitation

The work of Leeds City Council and its partners in tackling the risk of serious youth violence and criminal exploitation in the city has been praised by inspectors.

The findings of a 'Joint Targeted Area Inspection' (JTAI) – carried out by Ofsted, the Care Quality Commission (CQC), HM Inspectorate of Constabulary and Fire and Rescue Services (HMICFRS) and HM Inspectorate of Probation – have been published and praise the "effective and well-coordinated" response of the city's agencies to serious youth violence.

It follows a three-week inspection that concluded in March into how Leeds City Council and partners including West Yorkshire Police, West Yorkshire Violence Reduction Partnership (VRP), schools, youth offending teams and relevant health services work together to respond to children aged 10 and over who are at risk of, or affected by, serious youth violence and criminal exploitation.

The report's headline findings stated there is a "clear and mutually agreed focus on locally-based early intervention and prevention" and this involved a "high level" of engagement with children and families.

"Numerous interventions and projects have been developed to support children at risk," it said, adding: "Practitioners are astute and committed and many work relentlessly and passionately with children and families to reduce risks and inspire and divert children away from serious youth violence."

Inspectors also highlighted the "strong" multi-agency relationships among the city's strengths as well as organisations' use of data, research and information-sharing.

Councillor Debra Coupar, Leeds City Council deputy leader and executive member for resources, said:

"The consequences for children who are victims of serious youth violence can be significant including life-changing injuries, poor mental health, on rare occasions death, and for some, long-term challenges including drug and

alcohol misuse.

For the first time, the fund will also be open to projects delivering the Build element of Clear, Hold, Build (CHB). CHB is a framework developed by the Home Office to tackle serious and organised crime.

Organisations that are delivering projects in West Yorkshire's three pilot areas, BD3 in Bradford, Harehills in Leeds, and Ashbrow in Kirklees, are encouraged to apply.

The Mayor's Safer Communities Fund uses money seized by West Yorkshire Police and prosecutors from criminal activities, through the Proceeds of Crime Act.

The Chief Constable of West Yorkshire Police, John Robins QPM DL, said:

"Our police officers and staff work hard to ensure that criminals do not profit from their illegal activities, so it is heartening to see the difference that this cash can make to local groups and projects who are committed to making their communities safer.

"It is also pleasing to note that applications are now being accepted from projects working in support of the Home Office's Clear Hold Build framework - a tactic used by our Programme Precision teams and partners to disrupt those who are involved in serious and organised crime in West Yorkshire.

"Building resilience in communities blighted by serious and organised crime is key to addressing this issue, and using funds seized from criminals in this way sends a clear message to them that their presence is unwanted."

Applications close on 13 June 2024. For more information, including how to apply, visit www.westyorks-ca.gov.uk/mscf

"As a city, we are committed to doing all we can to protect our children and young people and we're pleased inspectors recognised our collective work across a wide partnership and our passion in safeguarding those who may be affected or at risk.

"However, we are not complacent and know there is still more to be done, which is why we're already working on an action plan to further address issues around serious youth violence."

Councillor Fiona Venner, Leeds City Council executive member for children's social care and health partnerships, said:

"This was an intensive and rigorous inspection into how we as a council and our partners all work together to address and prevent serious youth violence.

"The findings provide reassurance of the many areas of good practice within our city on this critical issue while also raising opportunities for future improvement and learning, so we can continue to make a real difference to children and families in Leeds."

The report can be viewed in full online on the Ofsted website.

This themed JTAI inspection into serious youth violence covered specific types of crime committed by, and affecting, children outside of the home and used the scope outlined in the Government's Serious Violence Strategy, which includes homicide and knife and gun crime as well as emerging threats such as the use of corrosive substances as weapons. It also included intervention in localities in areas where violent crime is prevalent, such as drug-dealing activity.

Themed JTAI inspections take place alongside an ongoing programme of JTAI inspections as part of the current Ofsted inspection framework into local authority children's services.



GROUNDWORKS & RESIN LTD
THE RESIN BOUND & PAVING SPECIALISTS

FREE FITTING & NO DEPOSIT REQUIRED FOR A SUMMER '24 INSTALL



We also supply and install

- Block Paving • Tarmac • Concrete • Gravel
- Artificial Grass • Walling • UVR Resin

We are a family run business with over 25 years experience offering high quality at affordable prices and providing a large range of products with guaranteed satisfaction.

Operating Nationwide,
please call our local surveyors for a quote
0800 193 1101

NEW SHOWROOM OPENING IN HALIFAX SOON

e: info@pdgr.co.uk
www.pdgr.co.uk



FairTrades
approved tradesmen
established 1985

facebook
FIVE STAR REVIEWS



We specialise in
UVR Resin



We are proud to support these charities



British Heart
Foundation

Marie Curie
Cancer Care



THE HOBBY SHOP

OPENING HOURS
MON - SAT 9-5
SUN 10-4

Nurturing Hobbies, Enriching Lives

Inside Crossgates Shopping Centre
Leeds LS15 8EU



STOCKISTS OF HENRY BELL BIRD FEEDERS & SMALL PET AND ANIMAL FEEDS



Email: thehobbyshopleeds@aol.com

www.thehobbyshopleeds.co.uk

COMPETITION!
WIN TO SPEND INSTORE
£25
PAGE 27

Innovative ABCD In Leeds Programme Set To Widen Its Reach As Three New Pathfinder Sites Given Go-Ahead



■ A new ABCD in Leeds Pathfinder site in Little London and Woodhouse will be delivered by Oblong, who are based at Woodhouse Community Centre

A pioneering asset-based community development programme is set to be expanded in Leeds.

This follows a decision by Leeds City Council to build on the success of its Asset Based Community Development (ABCD) programme and introduce three new Pathfinder sites in Bramley (Bramley Baths), the Hawksworth Wood area, residing in Kirkstall (HAVA), and Little London and Woodhouse (Oblong). The introduction of the three Pathfinder sites brings the total number across the city to 17.

Each new site will employ an ABCD Community Builder to identify different assets that exist in each area and seek to explore how they can harness and build on the capabilities, strengths, and skills of residents to deliver citizen-led initiatives that seek to shift power back into the hands of the local community.

Since 2013, the ABCD in Leeds programme has played an important role in providing a safe space for local people to lead on and make the changes they wish to see in the communities where they live. The ABCD model is based on focusing on what is strong in an area, creating a positive environment where people feel empowered to share their skills, knowledge, gifts, and ideas with each other. This community-led approach has created social connection and citizen-led action through the building of friendships, and reciprocal change, which has improved the health and wellbeing of the local people living there. Initiatives undertaken have ranged from dance and art groups to community choirs, gardening projects and cooking skills sharing, to coffee morning meet ups and knitting groups!

Preparation work is now underway with each new ABCD in Leeds Pathfinder site, with individual launches expected to take place this summer.

To find out more about ABCD in Leeds, please see: www.abcdinleeds.com

Councillor Salma Arif, Leeds City Council's executive member for Adult Social Care, Public Health and Active Lifestyles, said:

"We are delighted to be able to announce the introduction of three new ABCD in Leeds Pathfinder sites which will serve the communities of Bramley, Little London and Woodhouse, and the Hawksworth Wood area.

"This is very exciting news and is recognition of the truly fantastic work which the ABCD in Leeds programme has undertaken since its launch in 2013, harnessing and supporting the immense talent that exists in our communities. Not only do our Pathfinder sites led by local groups provide residents with an opportunity to learn new skills and discover hidden talents, they also crucially provide them with the support they need to contribute and

help bring forward positive change that mirror the individual needs of their communities."

Jenny Willetts, Business Development Manager, Bramley Baths, said:



■ Bramley Baths will deliver a new ABCD in Leeds Pathfinder site in Bramley

"We are overjoyed to be one of the recipients of the ABCD in Leeds grant. Championing this way of working within the Bramley community will create so many positive connections, experiences and opportunities for its residents."

Cherie Cartwright, Chair of HAVA, Cherie Cartwright, said:



■ The Hawksworth Wood area ABCD in Leeds Pathfinder site will be delivered by HAVA

"HAVA and KVDT are thrilled to have been allocated funding to employ an ABCD community builder for Hawksworth Wood.

"It is an exciting opportunity to further empower our community, listening to and drawing on their strengths. We are lucky to have a diverse community with great ideas and experience.

"Our ABCD community builder will support connecting this knowledge, bringing more of the community together to create positive change."

Fawzia Mir, Development Officer, Oblong, said:

"Oblong are very excited to be delivering the ABCD Pathfinder project in Woodhouse and Little London.

"Oblong has a proven commitment to asset-based community development, and we welcome the opportunity to deliver this project that aligns well with our vision and values."

New Artisan Market Comes To Briggate

A new artisan market is set to add an extra touch of handmade magic to Briggate in Leeds city centre.

Leeds Briggate Market will be running once a month on the much-loved shopping street, with a launch date of Sunday, June 23.

Showcasing and celebrating the work of independent producers and makers, its outdoor stalls will be selling everything from clothing, jewellery and art through to home décor, toys and pet treats. Visitors will also be able to tuck into a range of delicious street food and enjoy live music.

The attraction replaces a previous Briggate-based market which was run on selected Sundays by Leeds City Council and had for many years a strong focus on food.

The new market will be managed for the council by Little Bird Made, a company that has had significant success with similar ventures in other parts of Yorkshire.

It already operates monthly markets in nine locations – including Wetherby,

Knaresborough, Harrogate, Ripon and Thirsk – and also works in partnership with Harewood House on the estate's annual winter artisan market.

Councillor Jonathan Pryor, Leeds City Council's deputy leader and executive member for economy, culture and education, said:

"We're hugely proud of our existing retail offer here in Leeds, but equally we are always striving to make it even better by providing more choice and more attractions for residents and visitors alike.

"The new Leeds Briggate Market – as well as the ongoing success of the revitalised Leeds Kirkgate Market and other shopping destinations – shows the benefit of that kind of ambitious approach.

"The partnership between ourselves and Little Bird Made is really exciting, and one that we hope will give many local traders the chance to sell their goods and meet new customers in one of the city centre's best-known locations. I look forward to seeing the market open for business this summer."

Leeds Branches Out To Bring City's Trees To Life This Summer



Trees across Leeds city centre are being brought to life as unique characters this summer thanks to a playful new art installation.

"The Trees Are Alive" sees artist and designer Joe Mason breathe new life into the urban landscape by adorning 53 trees with more than 100 simple, yet captivating artworks, each featuring eyes, mouths, teeth and abstract shapes.

Spanning three city centre locations, City Square, Albion Place and Queen Square, the installation uses basic materials to bring trees to life by giving them facial expressions and their own personality.

Joe said: "I wanted to tap into the universal human instinct to find patterns and faces in the world around us. We're drawn to seek out the personality in everyday objects and that's what I want to celebrate by drawing attention to the natural world within the city – and most importantly make people smile."

The installation is funded by the UK Shared Prosperity Fund and will remain throughout summer. For those eager to unleash their inner artists, Joe Mason will also be hosting a children's workshop on August 7 where people can make their own tree characters.

Councillor Jonathan Pryor, Leeds City Council's deputy leader and executive member for economy, culture and education, said: "Joe Mason's art installation is a wonderful way to bring more play and imagination into the city centre, encouraging visitors to stay curious about nature and not just view it as static. Next time you find yourself wandering through the city centre, take a moment to pause, look up and appreciate our new friendly trees.

"We are working towards Leeds being the best city in the UK for children to grow up in and the new installation puts them at the heart of the city centre."

Find out more at www.thetreesarealive.com

Little Bird Made was chosen to operate the market following a competitive tendering process.

Jackie Crozier, managing director of Little Bird Made, said:

"We want to give local communities the best artisan stalls, while also giving traders – from Leeds, Yorkshire and beyond – the best opportunities to showcase and sell their handmade goods.

"Bringing people together by creating a fun space where they can hang out, eat and shop has been our mission ever since I founded the company in 2018.

"I'm delighted to be bringing Little Bird to Leeds city centre. Having previously lived in the city for 10 years, it feels like coming home."

The market's opening hours will be 10am to 5pm and it is being held on the fourth Sunday of each month.

Traders interested in finding out more about the opportunities offered by Leeds Briggate Market are asked to visit www.littlebirdmade.com

GARDENING

The Sweet Smell Of Summer, Is With Us At Last, Pull Up A Chair And Fill Up Your Glass



BY MARTIN S WALKER

June is a month when the freshness of new plant growth starts to reveal summer displays of colour and scent. It's a time when the garden starts to deliver on its promise of charm and exuberance, but in addition a time when both weed and grass growth is booming. The wet winter and early spring have meant that plant growth has been exceptional and with a little sunshine plants will produce bountiful displays and equally predicted is the promise of bumper fruit crops. In the vegetable garden we have been harvesting early salad leaves and clearing away the remnants of broccoli, kale and winter cabbages, a sign that it is time to sow brassicas for harvesting next spring.



Keeping on top of the weeds seems a never ending task, with every sprinkle of rain another generation of weed seedlings emerge, where do they all come from? Whilst seed can be blown in from neighbouring gardens and green-spaces, its amazing just how much dormant seed is contained within the top few inches of soil. A gardeners rule of thumb is that one year's seed will produce weeds for the next seven years, a frightening thought, so it's important to keep on top of removing weeds before they flower so they don't have chance to seed.

As plants put on growth and especially those grown annually for flower fruit or vegetables it is important to feed them regularly. Plants like tomatoes are very hungry, but when you think each plant has the potential to produce huge crops of fruit there is no way the compost they are growing in will hold enough nutrient for the whole season. I try to establish a routine and find that setting a particular day to a task means we generally keep on top of jobs. 'Feeding Friday' is the day we aim to feed all the plants in containers and in the greenhouses, using whatever we have to hand. We make our own feed from Comfrey to Banana skins but there is no doubt that a proprietary general liquid feed from your local nursery or garden centre will provide a more balanced feed and is more convenient to store and use.

'Dead heading', or removing faded flowers is very important at this time of year as removing faded flowers encourages plants to produce more blooms, this is true for all our annual bedding plants and shrubs such as roses and herbaceous perennials, and involves simply snipping with secateurs or nipping off using your finger and thumb, it's a good idea to check if container plants need watering at the same time.

There is considerable discussion about leaving some weeds in your lawn and even refraining from cutting your lawn at all during May, due to the value that this will bring for wildlife and pollinating insects. Whatever your view its important to weigh up the consequences, for example if you let your lawn grow for a month will your mower be able to cut a months growth? or would it be better to designate a small area of your garden for a wildlife area bearing in mind that you may have to tidy it up at least once every year. There are many gardeners who like the look of a well

manicured lawn reminiscent of a smooth flat golf green or a neatly mown cricket field, where weeds are banished and the lawn is fed at least twice every year and weeds are not allowed at any price, but unless this is your passion then a weed free lawn is not necessary and during dry weather, close mowing can stress the lawn causing dry brown patches. We prefer to call the green stuff between our beds and borders just the mown areas, which contain many species of plants that don't mind mowing and don't become a nuisance.



It's nice to see a few daisies, creeping thyme, ajuga, common speedwell, clover and the like, they all survive quite happily providing you don't mow too short, setting your mower to leave the grass about 25mm (1") will mean that during dry spells it will generally stay green, and indeed many of these plants will provide a tapestry of green during even the driest period, with some flowering and providing a food source for insects.



With fruit such as apples, pears, plums and cherries, there is a term used called the 'June Drop', it is a natural process that many fruit trees adopt where they have too much fruit on, and so they abort a proportion. You will often see some of the young fruit remaining small and turning yellow. It's important at this stage not to be tempted to thin the fruit, and wait until next month to remove any misshapen, deformed or overcrowded fruit.

Happy Gardening, Martin.

Next month, cutting back perennials, trim hedges and look through bulb catalogues.

Top Tip - Keeping Marigolds In Your Greenhouse

We rarely have to spray for pests in the greenhouse, and prefer to choose plants that help deter them where possible. One common summer pest is the 'white fly' clouds of tiny white flies whos offspring feed on the sap of greenhouse plants. Brushing past can release a cloud of white- flies, which in themselves are harmless to humans but can severely affect greenhouse crops.

Hygiene is the first step, and in late autumn when all the greenhouse crops have finished, I take all the remaining plants out and wash the whole greenhouse, inside and out with garden disinfectant, I find the plant based (citrus) greenhouse disinfectants quite effective and the bonus is they are not a problem for wildlife.

During the summer months it is difficult to use disinfectants especially if your greenhouse is full of plants, so I have two types of plant that I keep in the greenhouse along with rows of tomatoes, a cucumber or two and a melon plant. Firstly a perennial that is quite hardy and great at keeping on top of flies the sarracenia. We have a nursery near to us called 'Wack's Wicked' plants specialising in carnivorous plants, such as sarracenia, sundew, and venus fly traps. We have a small collection of sarracenia's which are hardy and can be kept in an unheated greenhouse throughout winter, some stay in the greenhouse all year but they are hardy enough to keep outside and are great to grow in a container on your patio, the bonus is that they are great at controlling flies if you like to sit out in the evening.



The other plant is French marigolds, which are brilliant at keeping 'white fly' at bay, so I either sow a few or pick up a pack of six from the local nursery or garden centre, pot them up individually into 2 litre pots and arrange them between the tomato plants, water the same as tomatoes and give them a liquid feed every three weeks, you can use the same as for your tomatoes.



Don't Buy Rhododendron Ponticum As It's Destroying Our Native Wildlife, Warns Woodland Trust

The Woodland Trust is urging gardeners not to buy rhododendron ponticum, as it looks to stem the threat of deadly tree disease and protect our native wildlife.

The popular plant may look nice but not only can it carry disease, it is known as an "invasive species" which can wipe out huge swathes of native woodland plants – and is particularly troublesome in our rare temperate rainforests – and costs the country millions a year to tackle.

The Woodland Trust alone spent £360,000 over the past year on invasive plant control, which includes removing rhododendron which spreads fast and crowds out other plants. It's a time consuming, painstaking process to remove them by root.

Imported rhododendron plants carry a strong risk of arriving with the deadly disease *Phytophthora ramorum*, which can be fatal to more than 150 plant species. In the UK, the control programme for this disease has resulted in large scale felling of larch plantations which harms our timber industry.

Rebecca Gosling is a tree disease expert at the Woodland Trust and in the build up to INNS Week, says more should be done to tackle the threat of rhododendron ponticum, including action from the Government.

She said: "Rhododendron ponticum is a real problem for the UK's native plants and trees. It is choking native woodland and shading out characteristic plants, including in important temperate rainforests which cover just 1% of land in the UK.

"Action must be taken to protect further species and habitats from the same fate. Increased trade and the growing impacts of climate change furthers the likelihood of new species

introductions. As a top five driver of biodiversity decline, the Government must treat invasive non-native species as a priority issue. A failure to get a grip on these and the pressure this places on struggling wildlife populations, will also make it harder to meet nature recovery targets and halt the decline in species abundance by 2030."

Invasive non-native species (INNS) are animals, plants or pathogens that have been introduced to an area outside their natural range as a result of human activities and not part of the natural spread of species, and cause a negative effect on the environment, population and/or economy.


INNS play a key role in 60% of recorded global species extinctions and are the sole factor responsible for 16% of documented global animal and plant extinctions.

The Trust believes that current measures are not effective at preventing species from establishing in the UK with the rates of INNS establishment increasing since 1960 with no indication that trends are changing. There are an estimated 311 different invasive species in Great Britain alone.

The Trust is asking the public to help protect our native wildlife by not buying and not planting rhododendron ponticum

Together with Wildlife and Countryside Link, is asking the Government to:

- Put the invasives species inspectorate on a proper footing, by increasing the invasive species biosecurity budget to £3 million
- Dedicate a further £3 million to fund a permanent species inspectorate, boosting the capacity of the invasives species inspectorate so that it may carry out increased border inspections to prevent new invasive species entering the UK.



www.lumbygardencentre.com

T: 01977 68 28 15

E: info@lumbygardencentre.com

A: Leeds/Selby Road
South Milford
Leeds, LS25 5LE

Opening times;
Mon - Sat: 9am - 5pm | Sun - 10am - 4pm
Coffee Shop: 9am - 4pm

Tomatoes, veg plants and packs now on sale

Vast variety of summer bedding plants, perennials, shrubs all to bring instant colour to the garden

Brand new delivery of furniture, many styles to choose from. Over 20 different styles of garden bench

Lawn care, pest control, weed killers, liquid and granular feeds, we have everything you need for your garden

You've tried the rest now come to the BEST!

- We are a traditional family-run garden centre and have been open since 1981
- Located just off Junction 42 of the A1 (M), 5 minutes from Garforth, we have a large selection of gardening items, from plants, shrubs, bulbs, seeds, lawn care, pest control, furniture, fertilizers, logs, coal, tools, and other gardening essentials
- We carefully select our stock from local growers and nurseries, therefore ensuring superb quality at competitive prices

Allotment Members Discount

Just show your allotment card at the till.

*Covers most gardening goods**



Visit Our Coffee Shop

Why not pop in and visit our coffee shop, serving hot meals, all-day breakfasts, sandwiches, snacks & drinks. **OPEN 7 DAYS**

Gardening Variety

We are the largest stockist of compost in the Yorkshire area including Peat Free & Peat Reduced.

Over 40,000 plants, shrubs, perennials, roses & trees on site. Pots, gravel, aggregates, we have it all!

Fantastic selection of evergreen shrubs and perennials to keep colour throughout the year. Plants and shrubs that you just won't find at any other garden centre. Unbelievable Olives trees that bring a focal point to any garden.

Fantastic selection of garden furniture, Rattan sets, benches, Bistro sets, Parasols, Garden statues.

10% OFF*

With this Yorkshire Reporter advert

*Some Exclusions Apply



Areas Covered;
North Leeds, East Leeds & Thorner
Wetherby & Surrounding Villages



Over 25 years of experience in garden maintenance, landscaping & tree/shrub management

• Mowing, Commercial & Domestic	• Hedge Reductions & Trimming	• Chemical Weed Control
• Lawn Care & Treatments	• Minor Landscaping	• Fencing
	• Rotovating	

For a reliable and professional service at an affordable price, contact;
07858 68 79 98
email - jjr1996@googlemail.com

Antiques And Collectables

With David Oddy



My grandfather on my mother's side was a coal miner at Waterloo pit which was situated near Temple Newsam. It was opened in 1815 named after the Battle of Waterloo and closed in 1966. My mum was the eldest of his 13 children and was known as the 'little mother of East End Park'. She looked after her 12 siblings from a very early age, allowing her mum to work earning a few extra shillings to feed the family. She would cook on an old coal range, feed and bathe the children in an old tin bath and have the kids in bed before her dad came off shift at the mine. She would have a meal cooked for her mum and dad and have the house clean and tidy. I can only vaguely remember my grandad. I used to sit on his knee and remember he always had a black face covered in coal dust but gleaming white teeth and gentle loving eyes. My mum did not leave home until she was 23 years old after she had seen most of her siblings leave school.

They lived in a two-bedroom back-to-back house in East End Park. I never did ask my mum where they all slept! Everyone in the street looked out for each other and if any one of the miners got injured the rest of his mates made sure the kids didn't go hungry. Part of me wishes I could have lived in that era but then I think about how bad living conditions were and God forbid if there was a war as the working classes would be the first to be called up to fight on some foreign soil – especially the First World War and many did not return.



The shop is doing ok but sales are well down on last year, I think everyone is feeling the pinch with prices soaring in the shops. I am still looking for new stock - small collectables are the most popular such as old postcards, coins, medals or anything war related. Old mechanical watches working or not, toys including Dinkys, Matchbox and Corgi, old trains and trainsets. Not forgetting the most valuable of all, any gold jewellery including broken chains or odd earrings etc with amazingly high prices paid.



I recently asked a genealogist to provide a family tree and it was a really worthwhile exercise. The genealogist traced my family back to the early 1700s and it would seem that my ancestors right back to 1760 all came from and remained in Leeds for generations. I found one of my ancestors was a clay miner and I must admit I did not know there was such an occupation. He probably worked for one of the many firms in Leeds and surrounding areas such as Leeds Pottery, Burmantofts or Leeds Fireclay Company. His job was literally digging clay from the clay pit with pick and shovel. I hate to think what the working conditions were like with no health and safety. They got paid a pittance and worked extremely long hours, with no sick pay or holiday allowance.



Please see advert below for contact details and opening times.

ANTIQUES AND COLLECTABLES

6 Church Lane, Crossgates, LS15 8BD. Just off Austhorpe Road. 2 Minutes from Arndale / Crossgates Centre

We are looking for stock

Anything WANTED that's old and interesting including

Medals, Toys, Clocks, Watches, China, Tools, Furniture, Taxidermy, Coins, Silver & Gold, Old Postcards, Jewellery, Scrap Gold and Silver

Fair honest prices paid

Please phone 07956 06 76 13 or 0113 264 94 66 for details

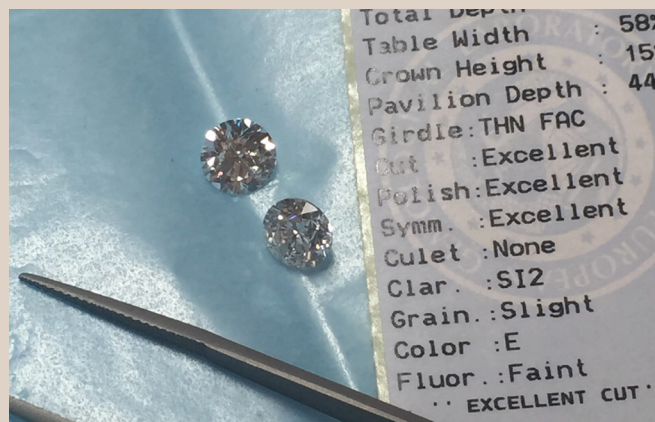
Open Mon - Sat 09:30 - 16:30 (CLOSED SUN) FREE CUSTOMER PARKING



Diary Of A Pawnbroker

Shine Bright Like A Diamond

“Jewellery has the power to be the one little thing that makes you feel unique.” So said Elizabeth Taylor who understood the joy of a big shiny rock better than anyone else.



At Christopher Brown Jewellers we specialise in our gemstone collection and we retail a range of stunning diamond jewellery at amazing prices.

Natural diamonds are a unique gemstone that hold a mystique and brilliance all of their own, millions of years old and each with a fire and brilliance that will quite literally light up the room..



Until recent sanctions, Russia was the world's biggest diamond exporter by volume, followed by the African countries. A state-owned company called Alrosa dominates Russian diamond mining - and it mined almost a third of the world's diamonds in 2021. About 36 million years ago, an asteroid slammed into northern Siberia and created one of the largest craters on Earth. Smashing into the earth at an estimated speed of 20 kilometres per second, the asteroid made an impact that ejected millions of tons of material into the

air and in the process created seams of priceless diamonds that have been mined ever since.

However from March 1, 2024, the ‘Diamonds Determination’ ruling prevents the importation of Russian mined diamonds with a weight of 1.0 carat or greater, and 0.50 carats if the diamonds have been substantially transformed into other products such as jewellery. The impact on the previous sanctions imposed after the Ukraine war began were not being felt as exports of rough stones were being polished and re-purposed in other countries, meaning that there was effectively a loop hole that was very hard to police. Perhaps the introduction of these tighter restrictions will work and already we have seen the market beginning to strengthen where large natural diamonds are concerned. This is the opposite of what’s happening to the man-made laboratory grown large diamonds which have literally dropped by nearly 40% in the last year alone to about 10% of the value of a natural mined diamond.



At Christopher Brown Jewellers, we buy the finest loose stones directly from our trusted wholesale partners, cutting out the middlemen and enabling us to offer incredible prices on quality diamond jewellery that would otherwise cost the customer so much more. Our reputation as a supplier of fine stones has increased each year and we often find customers travelling from all parts of the country to visit our 9 stores across the north including York, Seacroft, Pontefract, Shipley, Stockport, Prescot and latest store in Goole, knowing that our prices are very fair and the quality and service are excellent.

For those who like their shiny pre-owned bargains, we are the place to shop! We have a huge selection of natural diamond and gem-set jewellery at bargain second hand prices.

We also have a window dedicated to a HALF PRICE MANAGER'S SPECIAL range. We have an incredible range of unique and beautiful gem set jewellery ranging from £200-£20,000 that is literally 50% OFF! Call into your nearest store for expert advice to help you to find that perfect piece.

1/2 Price Manager's Specials

Yellow Gold, 2.14ct Two Row Diamond Cluster Ring



**WAS £4500
NOW £2250**

Mixed Cut 1.15ct Diamond Cluster Ring And 9 Carat White Gold



**WAS £2200
NOW £1100**

1.50 Carat Princess, Cut Channel Set Diamond Half Eternity Ring



**WAS £3390
NOW £1695**

9 Carat White Gold, Three Band, 1.16ct Diamond Baguette Set Ring



**WAS £3990
NOW £1995**

Visit www.christopherbrownjewellers.co.uk/sale to find out more or call into your nearest branch for a unique viewing.

Chris Brown

Latest News - New Goole Store Gets A Make-Over



A recent addition to our family business last year was our new store in Goole. Formally Arthur Read Jewellers it was established in 1948 and been owned and managed by 3 generations of the Read family building up a fine reputation for some of the finest gem set and gold jewellery in the area.

With the help of a UK Government Levelling Up grant the store has now undergone a complete refit to become our 7th Christopher Brown Jewellers store and 9th store for the business.

CHRISTOPHER BROWN

**PRE-OWNED LUXURY WATCHES
DIAMOND SPECIALISTS
BESPOKE JEWELLERY MANUFACTURE
VALUATIONS
CONFIDENTIAL ASSET LENDING SERVICE
JEWELLERY AND WATCH REPAIRS**

PERSONAL & BUSINESS LOANS*

*Subject to terms and conditions. Ask Instore for details.

SEACROFT:
Unit 4, Seacroft Shopping Centre
Leeds LS14 6JD
Tel: 0113 265 6029

YORK:
22-23 High Ousegate, York YO1 8RX
Tel: 01904 642 746

SHIPLEY:
8 Arndale Shopping Centre
Shipley BD18 3QQ
Tel: 01274 588 112

BATLEY:
87 Commercial Street
Batley WF17 5HZ
Tel: 01924 476 066

PONTEFRACT:
33 Market Place
Pontefract WF8 1AG
Tel: 01977 701 979

GOOLE:
Formerly Arthur Read
7 Boothferry Road, Goole DN14 5DE
Tel: 01405 763 556

www.Christopherbrownjewellers.co.uk

JEWELLERY RESTORATION

BESPOKE JEWELLERY



Four claws
One diamond on either side



Little diamonds



PLUS DISCREET PAWNBROKING LOANS AVAILABLE

GAMES TEMPLE

BUY | SELL | TRADE



We Buy, Sell & Trade Consoles & Games

- New & Pre-Owned Games
- Consoles
- DVD's & Blu-Rays
- Collectibles
- Controllers & Headsets
- Gaming Accessories
- Action Figures
- iPhone Screen Repairs

Best Cash Prices
Given On Games



Console Repairs

We offer a comprehensive repair service for consoles using top of the range machinery and quality replacement parts. Our fully qualified technicians have years of experience and a proven track record. Each repair includes a 12 month warranty.

381 Harehills Lane, Leeds LS9 6AP

SHOP OPEN: MON - FRI 10am - 5pm & SAT 10am - 5pm

Tel: 0113 240 35 95

Facebook: @gamestempleleeds Instagram: Games_Temple_Leeds

The Music Scene

With Stuart Glossop



■ Billie Eilish

Regular readers will know that we've known about her since she was a 15-year-old with *Ocean Eyes*. So, it would be amiss this month not to start with Billie Eilish and her highly anticipated third studio album, *HIT ME HARD AND SOFT*. The album does exactly as the title suggests. Featuring 10 original and genre-defying tracks, *HIT ME HARD AND SOFT* journeys through a vast and expansive audio landscape, immersing listeners through a full spectrum of emotions. A truly cinematic, diverse, and cohesive body of work, that Eilish considers a "family of songs," ideally intended to be listened to from beginning to end. *HIT ME HARD AND SOFT* is her boldest and most daring work yet, and what *Rolling Stone* hails as her "best album yet". Written by Billie Eilish and FINNEAS, her brother and long-time collaborator, who also produced the album. The album is available on all digital platforms, and in a continued effort to minimize waste and combat climate change; across all physical formats in limited variants, with the same track-listing and using 100% recyclable materials. Earlier, Billie Eilish announced her *HIT ME HARD AND SOFT: THE TOUR* starting in September 2024, Eilish will embark on her North American leg of the tour which runs through to the end of December 2024. The tour will continue in Australia starting February 2025 ahead of her European, U.K., and Ireland arena dates starting in April until late July.



The festival season has opened with the splendid Live At Leeds In The Park. As always, this particular festival sprung a surprise band that simply blew everybody else away. This year it was Merseyside alternative rock band The Mysterines who are soon releasing their second album 'Afraid of Tomorrows', the highly anticipated follow up to their critically acclaimed Top 10 debut album 'Reeling'. The album has a new release date, set for the 21st of June via Fiction Records to capitalise on their festival appearances. Recorded and produced by Grammy Award winning producer John Congleton (St. Vincent, Angel Olsen) in LA, 'Afraid of Tomorrows' is a deeper and darker foray into The Mysterines' psyche than its predecessor, and reflects the maturity and growth of the band, completed by George Favager (bass), Callum Thompson (guitar) and Paul Crilly (drums). "Afraid of Tomorrows is a mirror where you find you're nothing more than a formless being, one made from celestial constellations - of traumas, of the old and new, mistakes, addiction, fear and happiness, loneliness, but ultimately a desire for life and the fight to keep living. It's a collage of what's been lost and of love unbounded", says Lia. And a special mention for BABY QUEEN who ran them close as best of the day. The South African-born singer songwriter debut album 'Quarter Life Crisis', which soared into the UK top 5 on its release last October. Incidentally, In The Park's naughty sibling Live at Leeds In The City have shared the first wave of artists set to appear at this year's event, as the much-loved festival returns for its 17th edition in late 2024. Confirming a 16th November date, the groundbreaking Leeds new music all dayer will welcome art-rockers Everything Everything, indie wunderkind Alfie Templeman, Liverpool alt-rock quartet Stone, Earlestown's underground indie success story The K's, renowned UK grime MC Casisdead, and a whole host of further artists at the forefront of the UK's thriving new music scene. Confirmed venues for this year's festival include Leeds Beckett SU, LUU Stylus, Brudenell Social Club, The Wardrobe, Belgrave Music Hall, Headrow House, Hyde Park Book Club, Oporto, The Key Club and Northern Guitars, with the multi-venue format offering the audience a unique opportunity to curate their own perfect day of live music.

The following day it was SlamDunk. With all eyes on British rock royalty, You Me At Six playing their very last festival. It was emotional and raw as the crowd celebrated and remembered a career that spans 20 Years, You Me At Six had some amazing career highs including two Number One albums, world tours that saw them perform to thousands, streams that recently topped over a billion worldwide and faces that have graced the covers of multiple magazines across the globe.

Fleetwood Bac And Special Guests A Foreigners Journey Play Halifax - Victoria Theatre On Friday 28th June!

Fleetwood Bac, the Mac sound, the look, the mystical atmosphere and on-stage chemistry are all portrayed with a passion and energy that has received the seal of approval from 'Big Daddy' Mick himself. FLEETWOOD BAC are the world's first and without doubt leading Fleetwood Mac tribute Band, the only Mac tribute to authentically replicate the classic 'Rumours' line-up.

A Foreigners Journey pay homage to two of the most iconic rock bands of all time - Journey and Foreigner. The band has been wowing audiences with their authentic renditions of classic songs from both bands capturing the spirit and energy of Journey and Foreigner's music, bringing to life hits like "Don't Stop Believin'", "Cold As Ice", "Separate Ways", "I Want To Know What Love Is", "Open Arms" and many more.

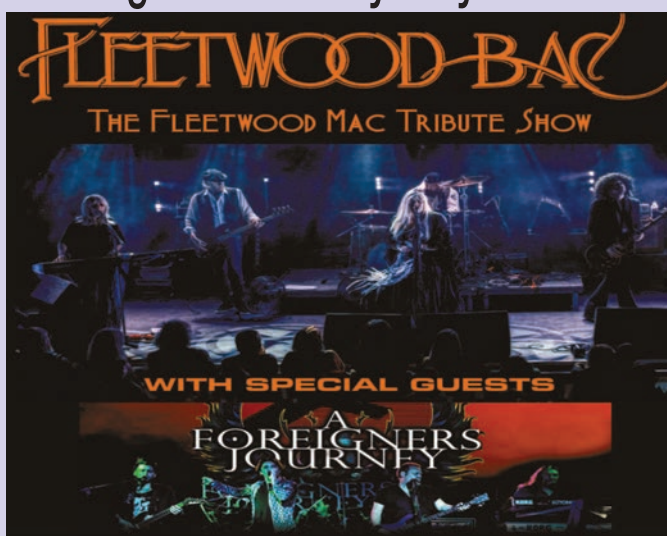
Tickets for the Halifax show are available from:

HALIFAX – Victoria Theatre

www.victoriatheatre.co.uk

Doors – 7.30pm / Starts – 8.00pm

Tickets - £27.50 + BF



WIN TICKETS

THE YORKSHIRE REPORTER HAS
A PAIR OF TICKETS TO THE
HALIFAX SHOW
TO GIVEAWAY

To enter simply send 'FLEETWOOD BAC' along with your contact details including tel number to

competitions@yorkshirereporter.co.uk

Terms & Conditions – Entries must be in by the 18th June 2024. The winner will be contacted by phone or email and may be required for a photoshoot of them receiving their prize. Yorkshire Reporter's decision is final and no cash alternative will be offered.



Casement Windows



Flush Sash Windows



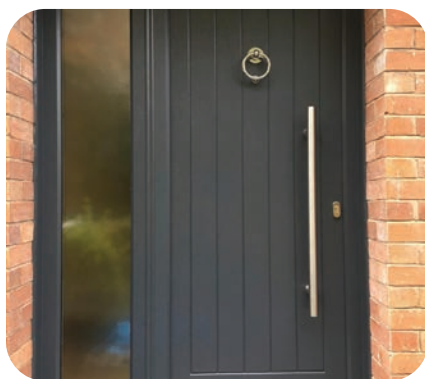
Vertical Sliding Windows



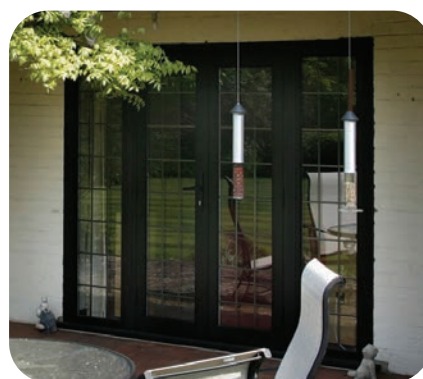
Bay/Bow Windows



PVCu Doors



Composite Doors



French Doors



Sliding Doors



Bi-fold Doors



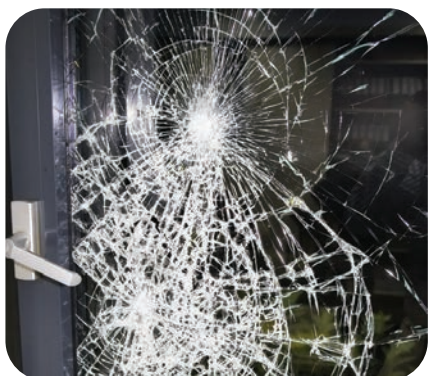
Splashbacks



Table Tops



Secondary Glazing



Broken Glass Replaced



Mirrors



Glass Cut to Size



Misted Units Replaced



0800 996 1168

www.leedsglass.co.uk

Leeds Glass Windows Ltd 401A York Road Leeds LS9 6TD

T: 0113 248 8433 F: 0113 248 1649 E: info@leedsglass.co.uk



LEEDS SUMMER OF EVENTS

Month-Long Armed Forces Celebration



The annual Armed Forces Day becomes the Armed Forces Festival for 2024.

Armed Forces Day is becoming the Armed Forces Festival for 2024 with a month-long extravaganza of themed activities culminating in the city centre-based Armed Forces Day event on Sunday 30 June.

The Armed Forces Festival, hosted by the Lord Mayor of Leeds, is a chance for everyone to show their support for the men and women who make up our Armed Forces community, from currently serving

troops and service families, to reservists, veterans, and cadets. Everyone in Leeds is invited to participate and there is something to suit all tastes.

Highlights of the festival include talks and exhibitions hosted by Leeds Museums and Galleries; a special D-Day anniversary music and comedy show at City Varieties; an armed forces career event at Leeds and York Partnership NHS trust; and a special tour of the Thackray Museum of Medicine which served as a First World War military hospital.

Leeds Library Service will also hold a series of events to mark the festival, including exhibitions and lectures by local experts across various sites in Leeds, family history workshops, and a curated online gallery relating to the armed forces on the Leodis photography platform.

During the weekend of 8 and 9 June, the Royal Armouries will be hosting a free D-Day 80 weekend, filled with blank firing demonstrations, poignant performance pieces taken from first-hand accounts of those on the beaches of Normandy and technical talks surrounding the weapon development during the Second World War.

The festival will culminate in the main Armed Forces Day event on Sunday 30 June, packed with family-friendly activities, parades, stalls, exhibitions, and music. In a change to previous years, the flag-raising event which usually takes place the Saturday before Armed Forces Day will now take place on the day itself, adding to the pomp and ceremony.

The Lord Mayor, Councillor Abigail Marshall Katung, said: "Leeds has a long history of supporting and celebrating our armed forces and this is a tradition I am keen to continue during my year as Lord Mayor.

"This year is special as we mark the 80th anniversary of D-Day, so it is fitting that we expand what is traditionally a one-day event into a month-long festival that offers something for everyone.

"There are some exciting events. I am particularly looking forward to learning more about our rich armed forces history in the city, including the incredible Barnbow Lasses, who are set to be recognised with a Civic Hall inscription.

"The Armed Forces Festival will be an incredible way not only to say thank you to the men and women of the armed forces community for the work they undertake around the globe but also a fun and engaging day out for all the family.

"I would like to extend an invitation to everyone in Leeds and I look forward to seeing as many people at the different events as possible."

Vibrant New Events Programme Announced For City Square

New look City Square is set to host an exciting outdoor events programme this summer.

The square, which has been transformed by one of the city's most ambitious ever transport projects, will be the setting for a brand new Thor's Tipi bar, monthly artisan market and a line-up of family-friendly activities as well as a big screen showing some of the season's biggest sporting highlights.

Starting this month, the events space will see Thor's providing a selection of cocktails and street food, along with giant outdoor games, easels, ice cream and soft drinks for children and local bands and artists performing live music each week.

The new big screen, part-funded by the UK Shared Prosperity Fund, will also be showing huge sporting events including Wimbledon, The Olympics and The Tour de France.

Amanda Monaghan, director at Thor's said "We're so excited to have our first ever Thor's Summer residency in Leeds. We'll be hosting brilliant summer parties, showcasing the best of sport on the big screen and entertaining families - all within our tipi wonderland on City Square. It's going to be a glorious Summer in Leeds!"

In addition to Thor's, City Square will also welcome a new monthly artisan village from Little Bird Made from July, complementing the recently announced market on Briggate.

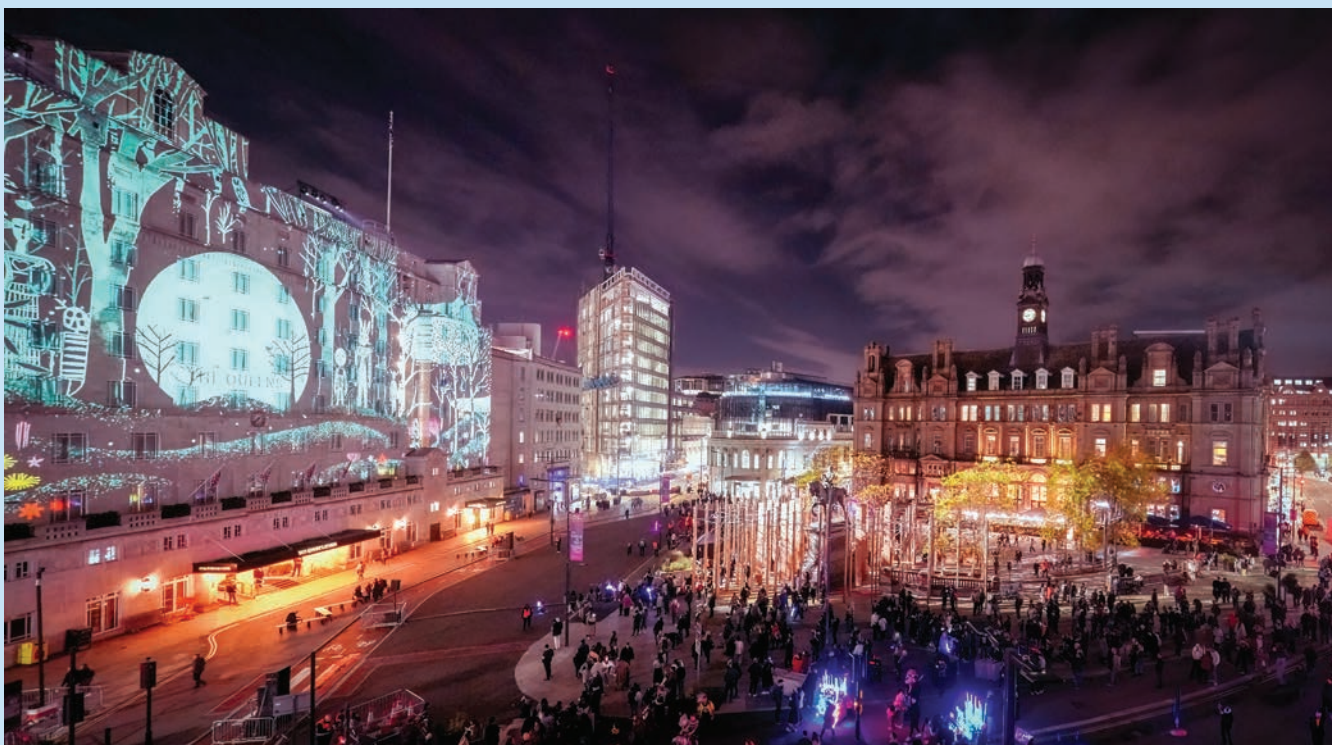
The announcement of the new summer events marks the conclusion of the City Square improvement works, which have seen a new traffic free gateway to the city created along with an impressive new pedestrianised space.

As well as serving as an urban events location, the City Square scheme also encourages more walking, cycling and use of public transport as part of the wider Connecting Leeds transport improvement project.

New seating has also been added to the square, allowing people to enjoy the space over the summer.

Future events and activity will be planned to make the most of the new space, with the council keen to gather feedback and evaluation follow this summer's programme.

Councillor Helen Hayden, Leeds City Council's executive member



for infrastructure and sustainable development, said: "When we set out on the journey to transform City Square, the long term vision was to create a modern, welcoming, pedestrian friendly gateway to the city where people could come together and enjoy the best of Leeds.

"We also wanted City Square to be a symbolic and stand-out example of our ambition to transform the city's transport network, reduce congestion and improve air quality.

"This summer, we will see all that work come to fruition, when the square welcomes a programme of events for all ages and we take another huge step toward a cleaner, greener and more sustainable city centre."

Thor's Tipi will be on City Square from June 14 until September 8 and, along with the artisan village, will be delivered at no cost to the council.

Other events scheduled for City Square over the coming year include the installation of a new artwork, the Yorkshire Sustainability Festival as well as Light Night Leeds and Christmas events later in the year.

More information about City Square and other transport improvements taking place as part of Connecting Leeds, visit;

www.leeds.gov.uk/parking-roads-and-travel/connecting-leeds-and-transforming-travel

Football's Coming Home As City Hosts Euro 2024 Fanzone



Football fans can follow England's hunt for glory this summer as Millennium Square hosts a Euro 2024 Fanzone at the heart of Leeds city centre.

Supporters will have the chance to cheer on Gareth Southgate and the team, with all the big game action shown live on the square's high-definition, giant LED screen.

England's group stage matches kick off against Serbia on Sunday 16 June (8pm KO), followed by Denmark on Thursday 20 June (5pm KO), and Slovenia on Tuesday 25 June (8pm KO).

If England qualify from their group, the round 16 knock-out game will also be shown on the big screen, scheduled for either Saturday 29 June or Sunday 30 June.

Entry is strictly by advance ticket only and the Fanzone is a standing only event. Gates open approximately one-and-a-half hours before each England match, welcoming fans into a specially created outdoor area with a licensed bar, several street food catering concessions, and toilet facilities.

Tickets are priced at £5 per person (inclusive of booking fees) are now available to purchase via www.millsqleeds.com or by calling 0113 376 0318 and are limited to four per person. The event is open

to ages 14 and above, and all persons under 18 must be accompanied by an adult.

The venue is also fully accessible with a raised viewing platform and disabled toilet provision. Full accessibility information and companion ticket details are available from the venue website or by calling Leeds Ticket Hub.

Other Euro 2024 matches will also be screened live at Millennium Square wherever possible on a non-designated event basis.

Fans are asked to note that due to the Summer Series concert series starting in July, any Euro 2024 matches coinciding with existing gig nights will not be screened on Millennium Square, unless otherwise stated.

Councillor Jonathan Pryor, Leeds City Council's deputy leader and executive member for economy, culture and education said "The atmosphere on Millennium Square is always fantastic and it's a great place for fans to really come together and enjoy the action over the summer.

"Leeds is a city that's always had a massive passion for sport, and I know the fans will do England proud as we cheer them on in what will hopefully be a memorable tournament for the whole country."

Series Concerts Set To Return To Millennium Square

Millennium Square is set to host some of the most exciting acts in music this summer as it gears up for the highly anticipated Summer Series.

Bringing a vibrant festival atmosphere right to the heart of Leeds from July 3 to August 4, 2024, the annual concert extravaganza returns this year with 13 nights of unmissable gigs.

Set against the majestic backdrop of Leeds Civic Hall, music aficionados will be treated to an eclectic combination of emerging artists and globally renowned icons.

The festival kicks off on Wednesday, July 3 with the Sounds Of The City concert series, featuring a stellar line-up of rock, indie and pop sensations. Chart-toppers lined up to perform include Nothing But Thieves, Anne-Marie, Tom Grennan, Paloma Faith, Busted, James Arthur and Suede & Manic Street Preachers plus special guests.

For those looking to experience some nostalgia, On July 20, the fifth edition of 80s Classical with the Orchestra Of Opera North features iconic acts Bananarama, Midge Ure, Johnny Hates Jazz and Deniece Pearson (Five Star).

For 70s fans, the world-renowned Brutus Gold's Love Train will return for its annual outdoor disco party. Millennium Square will also host two unmissable tribute headline shows with Legend – The Music of Bob Marley (August 1) and The Magic Of Motown (August 2).

Celebrating local talent, Leeds's very own Yard Act take centre stage on August 3 for their biggest hometown show to date. The series will wrap on August 4 with the annual Leeds Ska & Mod festival with this year's line-up including the likes of The Beat ft Ranking Jnr, Stranger Cole and The Chords UK.

Adding to the festivities, Millennium Square will once again host the official start of the annual Leeds Pride celebrations with a free event on July 21.

Councillor Jonathan Pryor, Leeds City Council's deputy leader and executive member for economy, culture and education, said: "Every



summer, Millennium Square becomes a focal point for music and live performances which bring thousands of people together at the heart of the city centre.

"It's great to welcome back such a vibrant and eclectic programme of events once again this year and to be giving the people of Leeds the chance to enjoy some incredible artists."

A number of street food catering concessions together with a fully licenced bar will be available within the specially created outdoor

Get Ready For A Summer Of Sporting Excitement

Leeds is getting set for a summer of major events that will strengthen its status as one of the country's sporting capitals.

Thousands of amateur athletes will be taking part in runs, bike rides and other events over the next few months, raising the city's national and international profile and boosting its economy.

Many others will have a watching brief, with sports fans ready to flock to famous venues such as Headingley Cricket Ground and Elland Road as they stage a mouthwatering programme of top-class professional action.

And all those preparing to play their part in the various events and fixtures – whether that's as a competitor, organiser or supporter – have been told they can look forward to the kind of exciting, inclusive experience that showcases the very best of Leeds.

The list of sporting dates scheduled for the city this summer includes:

The 2024 edition of the Leeds 10K, the much-loved annual run that was first staged back in 2007. Organised by the not-for-profit sporting events company Run For All with support from partners including Leeds City Council, it is being held this year on Sunday, June 23. More than 5,000 people are expected to take part in the race, which starts at the University of Leeds's Parkinson Steps and ends outside Leeds Art Gallery;

Legacy Ride, a mass participation cycling event that will mark the 10th anniversary of Yorkshire's staging of the Tour de France Grand Depart. Taking place on Sunday, July 7, the ride will visit some of the most scenic spots in the Yorkshire Dales in between a start and finish at Leeds's Roundhay Park. The event is being organised by leading cycling events company Struggle Events with support from Leeds City Council and sponsorship from Leeds-based advanced digital delivery consultancy Axiologik;

The UK Corporate Games 2024, which is running from July 25 to 28. Europe's largest multi-sport festival for businesses, it is being held in Leeds following a joint bid by Leeds City Council and the University of Leeds. The event will see thousands of participants from companies large and small competing in more than 20 sports, from badminton and basketball to tennis and ten-pin bowling.

Rugby league's 2024 Magic Weekend, is being held at Elland Road on August 17 and 18. In the world of cricket, Headingley will be hosting fixtures for the England men's team against Australia (September 21).

arena. The venue is also fully accessible with a raised viewing platform, disabled toilets and Mobile Changing Places. Full accessibility information and companion ticket details are available from the venue website or by calling Leeds Ticket Hub.

Tickets for all events along with information on the full line-up are available to purchase online from www.millsqleeds.com, by phone on 0113 376 0318 (Mon-Sat 10am-4pm) or from the Carriageworks Theatre (open two hours before any performances at the Carriageworks Theatre).



RECORD NUMBER OF CARS IN THE UK BUT RATE OF GROWTH BEATEN BY DELIVERY VANS

Following recent news that car registrations recorded the 21st month of continuous growth, new data has revealed the impressive rise in the number of LGVs and vans in the UK.

Reports from the Society of Motor Manufacturers and Traders (SMMT) have shown that despite the new car market reaching record heights, the rate of growth is far from the success seen with the new light goods vehicles (LGVs) and vans.

In fact, the UK's demand for these commercial vehicles rose by 5.4% in April as more businesses invested in the latest models.

This means that 23,889 new vans, 4x4s and pickups were registered – the highest total for the month since 2021.

SMMT data stated that this was due to fleets, who invested in vehicles to support local trades, doorstep services and other sections of the logistics sector.

Deliveries of medium-sized vans grew by 6.8% to 4,611 units, while the biggest percentage increase was for the smallest vans, up 41.1%.

The latest market outlook from SMMT expects the UK's new van market to grow by 3.3% to 353,000 units this year.



The New Continental GT Is Coming

The new, fourth-generation Continental GT is to be unveiled this month, as the first car built around Bentley's new Ultra Performance Hybrid powertrain.

Delivering 782 PS and 1000 Nm of torque, combined with 50 miles (80 km) of electric-only range and a CO2 figure (WLTP) of under 50 g/km, the new Continental GT marks a significant step forwards for Bentley. Not only will it be the most powerful and most dynamically capable Bentley road car in the company's 105-year history, it will also be the most sustainable – whilst retaining the handcrafted luxury and exceptional materials that are synonymous with all Bentleys.

The latest generation of chassis technology – including active all wheel drive with torque vectoring, four-wheel steering, an electronic Limited Slip Differential, 48V electric active anti-roll control and new, advanced dual-valve dampers. A new design and a new suite of technology complete the latest generation of the car that has come to define the modern Bentley.

Originally unveiled in 2002, the Continental GT started the rebirth of Bentley. The car was to transform the business, catalysing a ten-fold increase in sales and redefining Bentley for the modern era. Both the design inspiration, and the performance ethos of the Continental GT, came from the R Type Continental of 1952 – the fastest four-seat car in the world at the time,

which defined the concept of a luxury Grand Tourer. It was a long-distance cruiser for crossing the continent – hence the name. The Continental GT adopted the same three key design lines – the power line, the haunch, and the sloping roofline.

The impact of the Continental GT was dramatic – within four years, Bentley's annual sales climbed from circa 1000 car to over 10,000. A second-generation Continental GT was unveiled in Paris in 2010, with orders being taken from October and deliveries beginning at the start of 2011. The second generation launched with the W12, but was followed by a new 4.0 litre V8 option that was introduced in 2012. A third generation followed in 2018, based on a new and purpose-built platform and with a new engine, new suspension, new electrical architecture, new technology and new interior and exterior designs – together defining a new benchmark for the now highly competitive luxury GT sector.

Over the last 20 years, Continental GTs have broken speed records, and won championships and endurance races around the world. Globally, the Continental GT is Bentley's second most popular model (behind Bentayga), and one in every three Bentleys sold is a Continental GT. Early next year, the 100,000th example of this now iconic Grand Tourer will be handcrafted at Bentley's Dream Factory in Crewe, England.

KEEP ROAD TRIPS STRESS-FREE WITH THE MOTOR OMBUDSMAN'S SUMMER DRIVING TIPS

With many of us spending holidays in the UK, or preferring to drive over to the continent rather than fly, The Motor Ombudsman, the leading authority on motoring standards, is helping drivers to ensure their vehicles are legal and roadworthy.

To help ensure that you've covered all the bases this summer, The Motor Ombudsman has produced the following guidance to help you stay safe when travelling on the road, whether it's for a staycation in the UK, or if you're planning to head across the channel.

TREAD CAREFULLY

Regular tyre maintenance is critical, as the small contact patch is the only surface separating the vehicle from the road. The legal minimum tread depth in the UK is 1.6mm across the central three-quarters of the tread, and around the complete circumference of the tyre.

Inserting a 20p coin into the tread of the rubber is a quick and easy test to determine whether the depth is above the legal limit. If the outer band of the piece cannot be seen when it's inserted, then the tread is sufficient. Furthermore, look out for splits or bulges, as high summer temperatures can heat up tyres and aggravate any existing damage to the rubber.

All tyres, including the spare (if your car is not equipped with run flats), should be inflated to the pressures as recommended by the vehicle manufacturer (a sticker can normally be found on the door frame which indicates the levels in bar and psi).

Remember that they should only be checked when they are cold and have not been in use for a few hours. Under-inflation, which a tyre pressure monitoring system (TPMS) should indicate, can affect wear, handling and grip, especially during periods of inclement weather.

AT ITS BEST WHEN FLUID

Fluids and lubricants are a lifeline for a vehicle so that it can operate correctly. These include oil, screen wash and air conditioning coolant, and all should be topped up to the advised levels. It's always best to take your car to the garage if you're not sure where to replenish the fluids and lubricants under the bonnet, and how much to put in.

IT'S IN THE SMALL PRINT

Having valid documentation is essential for staying on the right side of the

law when on the road. Make sure that your insurance policy, car tax (Vehicle Excise Duty) and MOT certificate are all up to date prior to setting off. And read on for more info on documentation you may need to take if you're travelling abroad.

BREAKING DOWN THE ESSENTIALS

Planning for the unknown is essential, and therefore it's important that you have an appropriate breakdown policy which provides the right level of cover, including for travelling abroad if appropriate. Also, check what emergency equipment you have in the car (such as jump leads, a warning triangle and tyre sealant – if there's no spare), and what you need if you're planning to visit other countries. Moreover, the vehicle's handbook (usually found in the glovebox), often contains useful advice and troubleshooting information should something go wrong.

LIGHTING UP THE ROAD

Although the summer season is traditionally a period when there is the most daylight, it's still important that all front headlights, LED running lights, fog lights and rear lamps should be operating at their full potential and cleaned at least once a week to stay safe when travelling in the dark or when visibility is poor.

STICK TO THE RULES FOR DRIVING ABROAD

Road laws vary by country, and the essential equipment that needs to be carried also differs. For example, for those crossing the channel to France, a UK sticker on the back of the car, a warning triangle and high visibility reflective jackets are essential. You may also require headlamp beam converters. And you will also need to have all the necessary documentation with you such as your driving licence, valid insurance, a valid MOT certificate if your vehicle is over three years old, and your V5 document.

MAKE A POINT TO CHARGE AHEAD

Sales of electric vehicles (EVs) and plug-in hybrid cars are increasing, and therefore, if you drive one of these models, it's important that you are aware of the location of battery charging points along your route, whether in the UK or on the continent. Research how many miles you are planning to cover, what the distance is between charging stations, and if your accommodation has points available so that you can make sure your car has sufficient range for your trips.

Equally as essential is the health of your battery as it drives the car's electronic systems. If your vehicle is difficult to start, and the battery is more than five years old, you should look at getting it replaced as a flat battery is one of the main causes of breakdowns. This will help to avoid any unnecessary interruptions to journeys during the holiday period.

ACCESS IS KEY...

Make sure that you know the alternative method for getting into the car if the key fob fails or loses power. This is usually detailed in your vehicle's handbook.

FUEL FOR THOUGHT...

Do not fill the fuel tank completely, especially on hot days. As with most liquids, fuel will expand, and this could lead to it leaking out of the filler neck of the tank or breather. With prices at the pump on the rise, you can check online where the cheapest unleaded, diesel or LPG in a selected area of the UK can be found.

KEEP IT LIGHT

Carrying unnecessary items in the car may also raise fuel use. Therefore, if they are not required, remove any racks or boxes from the roof as these can create drag, and try to be realistic about what you will need when packing for your summer holiday.

ENTERTAINMENT FOR THE KIDS

To avoid the common question: 'are we there yet?', remember to plan ahead with entertainment for the kids. Ensure that all devices such as tablets and phones fully charged and ready with a few pre-downloaded films, and also remember their chargers and battery packs. It's also a time to get back to basics with traditional games of 'I-spy', jokes, riddles and a good sing-along!

KNOW HOW TO FIND A GARAGE YOU CAN RELY ON

Breaking down or needing a repair on your vehicle during a summer getaway can be a worrying time, especially when you're used to having a local, trusted garage you know you can rely on. The Motor Ombudsman's online Garage Finder will help you to locate your nearest CTSI-Approved Code accredited business. You'll be able to read reviews and find their contact details, so you can get back on the road and free to enjoy the rest of your trip!



BMW ART CAR BY JULIE MEHRETU CELEBRATES ITS WORLD PREMIERE

BMW presented the 20th BMW Art Car to the public for the first time at the Centre Pompidou in Paris. Designed by contemporary artist Julie Mehretu, the project transforms a BMW M Hybrid V8 race car into a performative work of art, continuing a longstanding tradition of BMW Art Cars and competitive racing. Just a few weeks after its premiere, the newest edition in the storied BMW Art Car collection will compete in the 24 Hours of Le Mans.

"The whole BMW Art Car project is about invention, about imagination, about pushing limits of what can be possible," says Mehretu. "I don't think of this car as something you would exhibit. I am thinking of it as something that will race in Le Mans. It's a performative painting. The BMW Art Car is only completed once the race is over."

"The BMW Art Cars are an essential part of our global cultural commitment," says Oliver Zipse, Chairman of the Board of Management of BMW AG. "For almost 50 years, we have been cooperating with artists who are just as fascinated by mobility and design as they are by technology and motorsports. Julie Mehretu's vision for a racing car is an extraordinarily strong contribution to our BMW Art Cars series. Julie Mehretu has created more than an amazing Art Car. Her ideas provided the impetus for us to expand the cultural commitment of our Art Cars to promote the creativity of young artists in Africa."

The collaboration includes a joint commitment to a series of Pan African Translocal Media Workshops for artists and filmmakers in various African cities in 2025 and 2026.



Check In For The Motorcycle Season

The motorcycling season has started and riders need to make essential checks to avoid common breakdown issues, says leading provider Start Rescue.

"Our data shows that half of all motorcycle breakdowns are due to the engine not starting or cutting out," says Lee Puffett, Managing Director of Start Rescue. "Non-start issues, such as a flat battery, account for 34% of call-outs, while a cut-out where the engine stops unexpectedly make up 16% of calls. That's why it's vital to keep your bike's battery properly charged or replace it when necessary."

A further 30% of motorcycle call-outs are due to: general mechanical faults (13%), gearbox and clutch issues (11%), and problems with the chain (6%). Other issues can be caused by tyres and fuel systems that have degraded while the bike has been stored over winter.

Most motorcycle breakdowns happen within a short distance from home, which is why Start Rescue motorcycle cover includes Local Recovery up to 10 miles and most policies include National Recovery too.

Lee Puffett adds: "Our dedicated motorcycle cover is among the most affordable on the market. As well as motorcycles, we also cover scooters and mopeds, and our operatives have the correct equipment to repair or transport your treasured motorcycle."

"We are the quickest to respond to a breakdown and reach 77% of call-outs

within 30 minutes to an hour. You can also take out personal cover if you're riding pillion, so you are still protected in the event of a breakdown."

Start Rescue has just been named Your Money's Best Breakdown Provider 2024 and the judges commented: "This shows you can win if you provide outstanding customer service, appealing products, and cater for Brits on a budget."

Start Rescue has a 4.4-star rating on Trustpilot, a five-star Defaqto rating and has achieved Which? Recommended Provider status for five years running. Start Rescue has also been awarded best Breakdown Cover provider in the Finder Customer Satisfaction Awards 2024 (www.finder.com), scoring 4.9 out of 5 for overall satisfaction with a 94% recommendation rate.

In the What Car? Survey of Best Breakdown Cover Start Rescue come top for best response time, reaching 77% of call-outs in 30 minutes to an hour and didn't leave anyone waiting for more than two hours. Start Rescue also won best in the survey for performing temporary repairs that let people continue with their journeys.

Launched in 2009, Start Rescue is an integral part of the nation's fourth largest breakdown and recovery service, Call Assist, which now has more than two million UK customers.

For further breakdown advice, please visit startrescue.co.uk



INDEPENDENT VW, AUDI, SKODA & SEAT SPECIALISTS

Mechanical

Electrical & Body Repairs

Full Servicing & MOT Testing Station

VAG Trained Master Technicians

Full Engine Diagnostics

Air Conditioning

CALL 0113 276 59 51/52

W: www.ivcleeds.co.uk

E : info@ivcleeds.co.uk

A: 16 Pontefract Road, Leeds LS10 1TB

10% OFF
LABOUR SERVICING & TIMING BELTS

WITH THIS YORKSHIRE REPORTER ADVERT

What's On @ Squires Cafe In June

Tues 4th - Japanese Car Meet

The monthly Japanese car meet (evening) £2 entry per car

Sat/Sun 8/9th - South Yorkshire Miniature Steam Rally

Lots of miniature steam powered tractor engines on display to look at and see working.

Sat 8th RBL1000 Miles run

Royal British Legion 1000 mile charity run

Sat 8th Harris owners club meet up

Harris owners club annual meet

Sun 16th - Classic Ford Meet

Static car meet for Classic Ford Models



Tues 18th - York Historical Vehicle Group

Showing of classic vehicles including cars, trucks and maybe bikes too. Plenty of olden and golden things to peruse

Sat 22nd - Ride of Honor

Ride leaving squires approx 11am

Sat 22nd AM - Autojumble

Our monthly autojumble. Pitches are £5 each for sellers

Fri/Sat 28/29th - BSA Owners meet up

West Yorkshire Branch BSA Owners Rally

Visit www.squires-cafe.co.uk for more details



A customer reassurance scheme financially backed by the Independent Garage Association (IGA)

WAGGING TALES!

CMA Presses Ahead With Full Investigation Into Vets Market



THE CMA'S TOP 3 TIPS FOR PET OWNERS

1. Look further than the closest vet

Many pet owners told us they choose a vet based simply on how close it is to where they live. It might feel convenient, but fees and services do differ between practices so check to be sure it's the right one for you.

2. Ask if there are other treatment options

Getting a treatment that works for you and your pet is what matters most. It's important that you understand why your vet has recommended a particular treatment or test. But if you're not sure about a treatment, or you're worried about the cost, speak to your vet.

3. If it's not urgent, consider buying the medication elsewhere

When it's an emergency, we just want to get our pet the medication they need as quickly as possible. But if your pet needs non-urgent care, then it can be cheaper, even when you include your vet's prescription fee, to buy the medication elsewhere - such as an online pharmacy or specialist pet shop. Around a quarter of pet owners who responded to our call for information were not aware of this.

For more information and the full tips go to:

www.gov.uk/government/publications/choosing-a-vet-practice-and-treatments-for-your-pet

The inquiry group will lead the investigation. The first few months will focus on gathering additional evidence from a wide range of stakeholders and conducting analysis.

Martin Coleman, Inquiry Group Chair said:

The vet services market is worth an estimated £5 billion a year and provides a necessary service to pet owners so it's right that we fully investigate competition concerns – this matters to businesses, veterinary professionals and, crucially, the 16 million households in the UK who have pets.

Market investigations are, by their nature, comprehensive and complex. They require time to fully explore concerns and to ensure that all points of view are heard so we can reach the right outcomes and take appropriate action, if needed, to make the market work for everyone.

For further information, visit www.gov.uk/cma-cases/veterinary-services-market-for-pets-review. This includes the consultation document and the decision document which outlines in more detail the background on the decision to accept the market investigation reference.

The CMA has confirmed its decision to launch a market investigation into the veterinary sector and published tips to help pet owners struggling with vet costs now.

This follows an initial review last September which prompted 56,000 responses to a call from pet owners and those working in the vet industry. The Competition and Markets Authority (CMA) then consulted on its provisional decision to launch a market investigation.

An inquiry group made up of independent experts and chaired by Martin Coleman will now oversee the investigation. Supported and advised by CMA staff, the group will be able to use the full breadth of the CMA's formal market investigation powers to gather additional evidence, examine concerns in more depth and shape any remedies that may be needed to address these concerns.

Based on the evidence so far, the CMA's key concerns remain the same as outlined in March. The CMA expects to use the market investigation to further explore whether:

- consumers are getting the information they need, at the right time, to make informed decisions
- a limited choice of vet businesses in some local areas is impacting pet owners
- profits earned are consistent with the levels expected in a competitive market
- vet businesses have the incentive and ability to limit consumer choice when providing treatments or recommending related services, particularly when they are part of large integrated groups
- the regulatory framework is preventing the market from functioning as well as it could

Examples of potential remedies include mandating the provision of certain information to consumers, imposing maximum prescription fees and ordering the sale or disposal of a business or assets – all of which are legally enforceable. The CMA can also make recommendations to government.

Sit, Stay, Survey: Dogs Trust Leeds Calling On Owners To Have Their Say In The National Dog Survey

What is the nation's favourite breed? Where do you like to walk your dog? What dog welfare issues matter most to you? And does your dog show any problem behaviours?

Dogs Trust Leeds is calling on local dog lovers to take part in the country's largest dog census, the National Dog Survey. With more than a third of all UK homes now shared with at least one dog, the nation's largest dog welfare charity wants to hear from owners on everything from the most common canine behaviour traits, day to day habits, your family's relationship with your four-legged friend, and much more.

Running until June 14th, Dogs Trust's National Dog Survey can be completed online at www.dogstrust.org.uk/dog-survey-24.

The results of the National Dogs Survey 2024 will be used by Dogs Trust to help shape the services and support offered by the charity to the nation's dog owners. In 2023, in direct response to insight gained from the National Dog Survey, the charity launched its Behaviour Support Line, offering owners free expert advice and guidance. Meanwhile, Dogs Trust has also launched pet food banks in many of its 21 rehoming centres, and in some of its charity shops, to support owners struggling with the cost of living.

Last year, 244,478 owners completed the survey, providing insights on 348,533 dogs. Some of the findings include:

- Almost 11% of all dogs owned in the UK are crossbreeds, with Labradors the number one pedigree in the UK, followed by Cocker Spaniels.
- Although still not in the top ten most popular breeds, Miniature Smooth Haired Dachshunds have seen a massive 85% rise in popularity in recent years.



- 7% of the UK's dogs now regularly go to work with their owners. Meanwhile, of those who would like to take their dogs to work, 81% told Dogs Trust that their workplace doesn't allow dogs.
- Over two thirds of UK dog owners have taken their dog on a UK holiday with them.
- Poppy and Alfie are the number one choice when it comes to names of dogs, followed by Bella and Charlie.

The results of last year's survey also confirmed the much-reported pandemic puppy boom, with a significant rise in the number of one and two year old dogs compared to the years prior to the Covid pandemic.

Owen Sharp, Chief Executive of Dogs Trust, says:

"The National Dog Survey is the largest dog census in the UK, and around a quarter of a million owners responded last year. But, with over a third of UK households now owning a dog, we want to hear from even more this year so we can gain as many insights as possible about dog ownership in the UK, helping us to shape our support for dog owners and improve dog welfare.

"Dogs Trust has been around for over 130 years and in that time so much has changed when it comes to dog ownership. The insights gained from this year's survey will ensure Dogs Trust can continue to adapt the way we support dogs and their owners, helping them to live the best lives possible together."



The RVC's VetCompass Programme Reveals The Dog Breeds At Most And Least Risk Of Tick Infestation

Recent research from the RVC has revealed that designer cross breeds, including Cavapoo, Cockapoo, Goldendoodle and Cavachons have higher risk of becoming infested by ticks due to their Poodle parentage. The study scored Standard Poodles as the second highest breed at risk of tick infestation – suggesting the curly coats of these dogs are simply too inviting for ticks to refuse to attach themselves. These findings aim to help owners, breeders and vets better understand why certain dogs are more at risk, what to look out for and how to best prevent tick infestation in dogs.

In recent years, owners have fallen in love with the concept of 'designer dog breeds' that result from deliberate crossing between established pure breeds and combining their names. For example, a Labrador Retriever crossed with a Poodle is known as a Labradoodle. While many of the new designer crossbreeds include Poodle heritage, often due to perceptions that their non-shedding coats make them less allergenic, this new study highlights the heightened risk of tick infestation as a drawback to owning dogs with these curly poodle-type coats.

The RVC's VetCompass study examined a random sample of anonymised veterinary health records from more than 900,000 dogs in the UK. Over a five-year period, almost 2,000 tick infestation cases were identified. These results show that ticks are a common parasite in dogs, with 2% (one in every 50 dogs) diagnosed with at least one tick infestation over the five-year study period.

The team explored a list of possible risk factors to understand what makes some types of dogs more prone to tick infestation than others. The factors investigated included characteristics such as the ear carriage, haircoat, skull shape, and bodyweight as well as demographic criteria spanning breed, breed purity, Kennel Club recognised breeds and groups, age, sex and more.

The study found that while the new designer breeds – increasingly popular among pet owners – had a higher risk of tick infestation, some longer established breeds were also at high risk, such as the Cairn Terrier, Standard Poodle, Parson Russell Terrier, Golden Retriever and Miniature Schnauzer. In comparison, the breeds with the lowest odds included the Staffordshire Bull Terrier, Rottweiler, Chihuahua and English Bulldog.

Male dogs had 1.24 times the risk compared to females. Dogs with medium-length coats (x2.20 risk) and those with V-shaped drop or long, floppy ears (x1.23 risk) also had higher risk of tick infestation.

Heart Survey Open To All Breeds

The Kennel Club, in partnership with the Veterinary Cardiology Society (VCS), has developed a new online survey, which aims to improve understanding of prevalence and type of heart disease affecting different pedigree dog breeds.

The survey hopes to gain insight which will help get a better understanding of the need for heart testing across breeds, as well as any breed-specific nuances that may influence heart disease development. The results will be used to direct new research to areas that require further attention.

The survey is open to all dog owners of all breeds – for both dogs that may currently be living or who have sadly passed away.

Charlotte McNamara, Head of Health at The Kennel Club said: "Heart disease is a broad term used to describe a range of abnormalities that affect the normal function of the heart. We are asking dog owners to kindly spend a few minutes to complete the survey for all dogs owned, either now or in the past, even if they have never been affected by heart disease. The results will allow us to direct new research to areas that require further attention. We

Ticks are parasites that attach to the skin and suck blood from animals and humans for up to a week before dropping off when they are fully fed. They can also transmit several serious diseases. Ticks normally live in woodland and grassland, and areas with lots of wildlife. However, factors such as urbanisation, climate change, increased national and international pet importation, and decreasing boundaries between humans, pets and wildlife, have expanded the geographic distribution of ticks and have increased the likelihood of infestation by ticks and transmission of infectious diseases that ticks can carry. Despite the human and canine health risks from tick infestation, until now, few studies had explored the frequency and risk factors for tick infestation in dogs in the UK.

Dr Dan O'Neill, Associate Professor of Companion Animal Epidemiology at RVC, and lead author of the study, said:

"There is no single perfect dog breed so it is critical that we fully understand the strengths and weaknesses for the breed we choose to bring into our own family. Owners of dogs that are either Poodle or have Poodle heritage can now be aware of the need to routinely check their dogs for ticks and to perhaps ensure the coats of these dogs are kept short."

Bill Lambert, Health, Welfare and Breeding Services Executive at The Kennel Club, added:

"Ticks aren't just pests that feast on your dog and cause them to itch; they can also be carriers of serious diseases. They can be dangerous for any age of dog and indeed any breed – although as this paper shows some dogs can be more susceptible to picking them up due to their coat – so it's important owners know what to do if they spot one.

"We hope this research, funded in part by The Kennel Club Charitable Trust, will help to increase vigilance amongst owners, and in turn prevent discomfort and the spread of infectious disease in dogs caused by ticks."

The RVC's VetCompass programme seeks to provide evidence-based research and guidance for vets and pet owners on a range of topics aimed at improving companion animal health, with more than 140 papers published. The research team for this new study on ticks was made up of academics from the RVC and also included an undergraduate veterinary student, Rinrada Komutrattananon, from the RVC's BVetMed course.

thank everyone for taking the time to contribute to this research and for help in improving canine heart health."

The survey will be managed and results collected by The Kennel Club. All personal information given will be kept confidential and be presented anonymously. To complete the survey, visit: www.surveymonkey.com/r/heartsPR. The survey should take no more than 10 minutes to complete.

The Kennel Club takes insights from research and feeds them into its Breed Health and Conservation plans, so that they can work with breeders to give information and guidance about how to ensure the future health of pedigree breeds. These plans, which enable The Kennel Club to track progress and make meaningful changes to breed health, have been developed as a result of reviewing more than 4000 research papers, which makes these plans the most comprehensive review of pedigree health data anywhere in the world.

More information about what The Kennel Club does for dog health is available at thekennelclub.org.uk/health.



New state of the art main surgery at Temple House with silver ISFM cat friendly accreditation

Convenient local branches throughout Leeds

Experienced, friendly team with special interests in surgery (including keyhole spays), medicine, feline medicine, cardiology, and dermatology and nurse clinics including senior pet and weight clinics

Excellent parking and extended opening hours at Temple House, 8.30am-7.30pm Mon-Thurs, 8.30am-6pm Fri-Sun



Ask our friendly team about our Pet Health Club

The affordable plan to keep your pet healthy

Temple House Surgery

Limewood Approach, Seacroft, Leeds LS14 1NH
0113 264 5422

Chapel Allerton Surgery

335 Chapeltown Rd, Leeds LS7 3LL
0113 262 1189

Beeston Surgery

430 Dewsbury Rd, Beeston, Leeds LS11 7LJ
0113 270 0325

Garforth Surgery

28 Springmead Dr, Garforth, Leeds LS25 1JW
0113 232 0030

Headingley Surgery

177 Kirkstall Lane, Headingley, Leeds LS6 3EJ
0113 295 8855

SCAN ME

 @BeechwoodVets

beechwoodvets.com



SPECTACULAR EYEWEAR

We put new lenses in your own frames & sunglasses from

£39 Single Vision

£59 Bifocal

£79 Varifocal

Bring us your prescription for Spectacular service & value!

Prescription sunglasses from £69.95

Sports Eyewear & Swimming Goggles

FREE PARKING

WHAT MAKES US UNIQUE?

- We treat you as an individual, you're never just a number to us!
- We pride ourselves on offering the highest standards of service
- We are qualified and registered Dispensing Opticians with vast experience on all prescriptions
- We offer some different styles and designs that you won't find on the high street and we constantly update our stock
- Our prices are amazing and backed up by our exceptional aftercare service
- So whether you're after a simple pair of reading glasses, designer style with Varifocal or just lenses into your own frame we're confident you won't find better service and prices so please get in touch or come and visit us at Cross Gates.



119-121 Crossgates Road, Leeds LS15 7PB

Sunday & Monday CLOSED

Tue to Fri 9.30am – 4.00pm

Sat 9.30am – 3.00pm

Closed for lunch daily 1.00pm – 1.30pm

Tel: 0113 264 60 01

Web: www.spectaculareyewear.co.uk

 @SpectacularEyewearLeeds





HEALTH

Get help to buy food and milk with the NHS Healthy Start Scheme

Low-income families and pregnant women in Leeds are urged to make use of a healthy food scheme as statistics show nearly 3,000 households could be missing out.

The Healthy Start scheme, a national food welfare scheme, intends to improve the diets of pregnant women and children up to age four in low-income families. All pregnant women under the age of 18 are also eligible for the payments.

Anyone eligible receives monthly payments that can be used to buy fresh, frozen, or canned fruit and vegetables, dried or canned pulses, cow's milk or cow's milk-based infant formula.

In Leeds, 24.6% of children are living in families on relative low income (2020/21) and despite the increase in need caused by the cost-of-living crisis, take-up of the scheme is stalling across the country. Of the over 8,000 eligible families in the city only 68% are making use of the scheme.

Leeds City Council is now urging everyone who qualifies for the scheme to sign up and make use of the prepaid card.

To qualify for Healthy Start, you must be at least 10 weeks pregnant or have a child under 4 years, and be in receipt of one of the following:

- Income Support

- Income-based Jobseeker's Allowance
- Income-related Employment and Support Allowance
- Child Tax Credit (with a family income of £16,190 or less per year)
- Universal Credit (with a family take-home pay of £408 or less per month)
- Pension Credit (which includes the child addition).

You also qualify if you are under 18 and pregnant, even if you don't get any of those benefits or tax credits.

What you'll get:

- £4.25 each week of your pregnancy from the 10th week
- £8.50 each week for children from birth to 1 year old
- £4.25 each week for children between 1 and 4 years old

The prepaid card can be used in most places that sell eligible healthy food and milk items and accept Mastercard®. The card is topped up every four weeks with the payments.

There are several traders in Kirkgate Market who are supporting the scheme, where you can get great value fruit and vegetables and other healthy foods:

- Greenzone, unit 280 & 282, 1875 Hall

- Neils Quality Greengrocers, unit D, 1904 Hall
- The Nut Shop, unit V, 1904 Hall
- Tony Banks fresh fruit and veg, unit 227, fish and game row
- Whittakers Eggs and Cheese, unit 324 & 325, fish and game row

Councillor Salma Arif, Leeds City Council's executive member for adult social care, public health and active lifestyles, said: "The Healthy Start scheme is there to help families increase the amount of fruit and vegetables they eat, and give their children a great start in life. We know that a good diet in pregnancy and in the first few years of life is essential for prevention of disease and to ensure children reach their full potential for growth and development.

"It's a great scheme and we want to ensure that everyone who is eligible is making the most of it and not missing out on support for them and their family."

Councillor Jonathan Pryor, Leeds City Council's deputy leader and executive member for economy, culture and education, said: "We're delighted that traders in Kirkgate Market have decided to get involved in the Healthy Start scheme, supporting our communities to gain access to fresh fruit and vegetables.

"As a city, we want to make sure all children have the start in life that they deserve, so don't hesitate to apply for the scheme if you are eligible."

Victoria Eaton, Leeds City Council's director of public health, said: "It's really important to ensure every child in Leeds has the right conditions for the best start in life. This is a priority for improving the health of the city. The Healthy Start scheme can be a lifeline for many pregnant women and families with children under 4 in Leeds, acting as a nutritional safety net and enabling them to buy more milk, fruit and vegetables and claim vitamins. We're really keen to make people aware of this and encourage and support all eligible families to sign up to the scheme."

To apply, visit healthystart.nhs.uk, or email healthy.start@nhsbsa.nhs.uk, or call 0300 330 7010. Recipients will receive a plastic card that can be automatically credited. If you need help with the application process, please contact Digital Health Hubs – 100% Digital Leeds at:

www.digitalinclusionleeds.com

To be a Healthy Start Champion and promote the scheme in your local area resources can be accessed at NHS Healthy Start communications toolkit (nhsbsa.nhs.uk).

New Cardiac Research Will Save Women's Lives By Improving Detection Of Heart Failure

An important new study has advanced how heart failure is detected in women – meaning more female patients can be diagnosed and at an earlier stage.

Researchers led by teams from the Universities of Leeds, East Anglia (UEA) and Sheffield have been able to fine-tune how magnetic resonance imaging (MRI) is used to detect heart failure in women's hearts, making it more accurate.

Co-author Dr Peter Swoboda, Associate Professor of Cardiology in the University of Leeds' Faculty of Medicine and Health, said: "The symptoms of heart failure, like breathlessness and fatigue, can have a devastating effect on patients' quality of life.

"We are increasingly recognising the importance of early diagnosis - and early treatment can improve symptoms and life expectancy.

"This research will help diagnose heart failure in women more quickly and get them established on life-saving treatments sooner."

Women suffer disproportionately from a type of heart failure where the pumping function of the heart is preserved but the ability of the heart to relax and fill with blood is impaired.

Echocardiography, a common test which shows blood flow through the heart and heart valves, struggles to diagnose this type of heart failure.

Previous research showed that MRI scans could be used to detect heart failure, which led to this technique being widely employed by medics.

However, this was not as accurate in diagnosing heart failure in women, especially in early or borderline disease.

For this study, the team was able to create an equation which allowed them to non-invasively derive the pressure in the heart using an MRI scanner.

The improvements in diagnosis from this new work will enable more of this particular cohort to be diagnosed more accurately and hopefully drive better treatments.

Lead author Dr Pankaj Garg, of the University of East Anglia's Norwich Medical School and a consultant cardiologist at the Norfolk and Norwich University Hospital, said: "By refining the method for women specifically, we were able to diagnose 16.5% more females with heart failure.

"This could have huge impact in the NHS, which diagnoses around 200,000 patients with heart failure each year.

"This improved method will increase early detection, meaning more

women can get life-saving treatment sooner."

Co-author Dr Gareth Matthews, of the University of East Anglia's Norwich Medical School, said: "Currently one of the best ways of diagnosing heart failure is to measure pressures inside the heart with a tube called a catheter.

"While this is very accurate, it is an invasive procedure, and therefore carries risks for patients, which limits its use.

"For this reason, doctors tend to use echocardiograms, which are based on ultrasound, to assess heart function, but this is inaccurate in up to 50% of cases. Using MRI, we can get much more accurate images of how the heart is working."

Co-author Professor Andy Swift, of the University of Sheffield's School of Medicine and Population Health, said: "Women's hearts are biologically different to men's.

"Our work suggests that in heart failure women's hearts may respond differently in response to increases in pressure."

The Government's Health and Social Care Secretary, Victoria Atkins, said: "Heart failure is a devastating condition affecting hundreds of thousands of women in the UK, so this research is a hugely positive development that could make it possible for thousands of people to get diagnosed and treated at an earlier stage.

"For the second year of our Women's Health Strategy for England, I have been clear that we need more research to look at the differences between how conditions affect men and women.

"I am delighted that this government-backed research has met this challenge so that we can get life-saving treatment to women faster."

The research was a collaboration between the University of East Anglia, the University of Leeds, the University of Sheffield, the Norfolk and Norwich University Hospital NHS Foundation Trust, the National Heart Research Institute Singapore, Duke-NUS Medical School in Singapore, Queen Mary University of London, the National Institute for Health and Care Research's Sheffield Biomedical Research Centre, the University of Amsterdam and Kocaeli City Hospital in Turkey.

It was funded by the National Institute for Health and Care Research (NIHR) Sheffield Biomedical Research Centre, the Wellcome Trust, and the National Medical Research Council (NMRC).

"Sex-specific cardiac magnetic resonance pulmonary capillary wedge pressure" is published in the *European Heart Journal Open*.

Licensed Drug Testing Continues At Music Festivals This Summer

Confiscated and surrendered drugs will be tested at music festivals this summer to identify toxic substances in circulation and help prevent drug-related overdoses.

A continuation of long-standing government policy, licences have been issued under strict conditions to drug testing organisations to operate at some of the leading festivals in the UK.

Confiscated or surrendered drugs will be tested on site and public alerts will be cascaded to festival goers if extremely potent drugs are detected to protect the public as much as possible and help prevent drug-related harm. The message to festival goers is there is no safe way to take illegal drugs.

This will also provide an important source of data for the government's early warning system in tracking the prevalence of emerging threats, such as synthetic opioids, so that police and health support services can take swift action to contain the problem should any be identified.

Back-of-house drug testing does not see drug samples returned to an individual or provide them with tailored information on the content of their sample, as it was made clear there are no safe ways to take illegal drugs.

More licences are expected to be issued in the coming weeks.

As in previous years, organisations wishing to deliver back-of-house drug testing must apply for a Home Office licence to operate responsibly, in line with government policy to ensure that they do not condone drug use which is illegal.

There has been no change in the government's position on drug testing at festivals. It has long been a requirement for anyone handling controlled drugs, including drug testing services, to acquire a licence.

The Home Office continues to keep an open dialogue with any potential applicants who wish to apply for a licence, including organisations that deliver drug testing services, to ensure the strict requirements attached to back-of-house drug testing are fully understood.

Information about controlled drugs licences for companies that possess, manufacture, produce or supply controlled drugs in England, Wales or Scotland can be found in the controlled drugs: domestic licences guidance.

AI Technology To Help Cut Cancer Waiting Lists

Game-changing AI technology will be rolled out to all radiography departments in England in a matter of weeks – backed by £15.5 million in new Government funding.

Cancer waiting times are set to fall thanks to new AI technology that locates cancer cells 2.5 times quicker than doctors alone.

It works by automatically reviewing a CT or MRI scan, helping doctors quickly distinguish between cancerous cells and healthy organs and to prevent healthy organs from being damaged during radiation treatment.

Trained health workers will of course review any report before administering any treatment – helping tens of thousands of cancer patients each year get faster treatment.

The UK is at the forefront of embracing and embedding AI into the healthcare system, and with it already being used in 90% of stroke units in England – which is speeding up diagnosis and treatment.

The announcement is another major step to help cut NHS waiting lists, relieve pressure on hospitals, free up staff time, and support people in care settings to live more independently.

Health and Social Care Secretary Victoria Atkins said:

"This is an exciting breakthrough in our work to improve cancer diagnosis and treatment, and AI is helping to make our healthcare system faster, simpler and fairer.

"Thanks to such innovation, as well as our measures to help people quit smoking, and our work to grow the number of doctors in clinical oncology and radiology by a quarter since 2019, I'm pleased to say survival rates across almost all types of cancer are improving."

Dr Imogen Locke, national speciality adviser for radiotherapy at NHS England said:

"The NHS is embracing AI and its benefits for cancer patients and every radiotherapy department will soon be able to offer the latest technology to help diagnose and treat patients more quickly. We are seeing a record number of referrals for suspected cancer, and game-changing tools like AI will help the NHS continue the significant progress made in tackling the longest waits for patients."

New Dentists Required To Deliver NHS Care Under Government Plans

Newly qualified dentists could be required to deliver NHS care for several years after they graduate under a government consultation.

Training an individual dentist can cost up to around £300,000, of which costs in the region of £200,000 are not repayable by the student.

However, a growing proportion of dentists are opting to go straight into private practice or are choosing to deliver little to no NHS work shortly after completing postgraduate dental foundation training.

Of more than 35,000 dentists registered with the General Dental Council in England, just over 24,000 delivered some NHS care in England in 2022 to 2023. This means nearly one-third of registered dentists are not contributing to NHS dentistry and may be working solely in private practice.

Under its consultation, which will run for 8 weeks, the government is asking whether newly qualified dentists should commit to delivering a minimum amount of NHS dental care for a minimum number of years after graduating, and whether they should repay some of the public funding invested in their training if they do not.

Health and Social Care Secretary Victoria Atkins said:

"I want to make access to dentistry faster, simpler and fairer for everyone - and part of this is ensuring that dentists are supporting the NHS with their skills and expertise.

"Taxpayers make a significant investment in training dentists, so it is only right to expect dental graduates to work in the NHS once they've completed their training.

"This builds on our dental recovery plan, which set out how we will create up to 2.5 million extra appointments this year alone and is already showing results with an extra 500 practices providing appointments."

The proposals form part of the government's overall plan to accelerate the recovery of NHS dentistry from the COVID-19 pandemic and reform how NHS dentistry operates.

They build on the aims of NHS Long Term Workforce Plan to

expand the dental workforce and improve access to NHS dental care, especially in under-served parts of the country.

The government believes working in the NHS will give dental graduates the best start to their careers, by giving them the broadest range of experience, great support from strong teams of dental professionals and the most comprehensive training.

Experience in NHS dentistry helps to produce well-rounded clinicians who can work alongside different professions and deliver high quality and safe patient care, and can be supplemented by additional work in private dentistry. The government believes this balance is better for our skilled dental workforce and better for the patients they treat.

NHS dentists are currently delivering a greater volume of NHS treatment than the year before, with 'courses of treatments delivered' increasing by 23% in 2022 to 2023, compared to the previous year.

There is currently no requirement for dentists to work in the NHS following the completion of their training. In contrast, a graduate medic in the UK must undertake a minimum of one year of foundation training to register as a doctor, followed by an additional year of foundation training and at least 3 years of general practice specialty training to become a GP.

The launch of the consultation is the latest milestone in the delivery of the government's dental recovery plan. Since the plan was published in February, the government and NHS have worked to:

- introduce a new patient premium, supporting dentists to take on new patients - with more than 500 more practices saying they are now open to new patients compared to January
- launch the 'golden hello' recruitment scheme to incentivise dentists to work in under-served areas
- raise the minimum units of dental activity (UDA) rate to £28 this year, making NHS work more attractive and sustainable
- open a consultation on proposals to make it easier for overseas dentists to work in the UK



Helping the Local community of Leeds and its surrounding areas with their hearing care needs for over 20 years

WE COME TO YOU HOME VISITS ARRANGED JUST PHONE US TO BOOK AN APPOINTMENT

Or alternatively call and book to visit our practice in Wyke for earwax removal, full hearing assessments and hearing aids. Free parking available

Every Thursday we offer an online booking service for ear wax removal appointments at our clinic in Wyke

For all other hearing related appointments please call to book an appointment

Call 07548 169 690 to arrange a home visit
Email lucas@lphearingcare.co.uk Web www.lphearingcare.co.uk



VOTED **NO.1** MOBILITY RETAILER IN THE UK

PRESTBURY RISER RECLINER

DUAL MOTOR

MADE IN THE UK

FROM ONLY £1099*

SAVE £300



WRENBURY FABRIC RISER RECLINER

DUAL MOTOR

MADE IN THE UK

SPECIAL OFFER FROM ONLY £949*

SAVE £150



CALVERLY ADJUSTABLE ELECTRIC BED

INCLUDES MATTRESS

ONLY £699*

MADE IN THE UK

*Excludes Headboard

3 LUCKY CUSTOMERS WILL WIN BACK THE COST OF THEIR ADJUSTABLE BED!




STAIRLIFTS

STRAIGHT NEW

FROM ONLY **£1495***

SAVE UP TO £100 ON SELECTED STRAIGHT NEW STAIRLIFTS

CURVED NEW

FROM ONLY **£3295***

SAVE UP TO £1000 ON SELECTED CURVED NEW STAIRLIFTS

STRAIGHT RECONDITIONED

FROM ONLY **£395***

SAVE £100

CURVED RECONDITIONED

FROM ONLY **£1995***

SAVING UP TO £500

SAVE £200 OFF EXTENDED WARRANTY COVER INCLUDING 5 ANNUAL SERVICES

FREE NO OBLIGATION QUOTES FROM FRIENDLY LOCAL ENGINEERS

FREEPHONE: 0800 470 1565

Ableworld

www.ableworld.co.uk

Your Local Specialist

THE **NO.1** MOBILITY & STAIRLIFT SUPERSTORE

APEX ALUMA-LITE BOOT SCOOTER

ONE OF THE LIGHTEST ON THE MARKET

SPECIAL OFFER £1499*

SAVE £300

FREE TRAVEL BAG



JIFFY MANUAL FOLD +

LIGHT WEIGHT

ONLY £1499*

FREE TRAVEL BAG



Q50 R CARBON FIBRE POWERCHAIR

EASY TO LIFT

LIGHT WEIGHT

ONLY £2449*



S425 STERLING ROAD SCOOTER

EASY TO DRIVE AND RELIABLE

ONLY £1999*

FREE TRAVEL BAG



10% OFF SOCKS

4 FOR 3

ON ABENA PANTS

VARIOUS SIZES AVAILABLE



APEX LITE BOOT SCOOTER

SPECIAL OFFER ONLY £649*

SAVE £180

FREE TRAVEL BAG



3 LUCKY CUSTOMERS WILL WIN BACK THE COST OF THEIR ADJUSTABLE BED!



LEEDS ARMLEY ABLEWORLD

4 Centre West, Stanningley Road, Armley, Leeds LS12 3AP

Tel: 0113 866 2889

leeds@ableworld.co.uk

Next door to Barnardo's

OPEN 7 DAYS A WEEK

www.ableworld.co.uk

Voted UK's no.1 Mobility Retailer 2019, by Access & Mobility Professionals

WINNER 2021

Which? Trusted Trader

naep

Dementia Friendly

NHS Vouchers Welcome Where Applicable

*VAT Exempt - Ask in Store for Details

MRP- Manufacturers Recommended Price

Previous Price - Sold for 28 days in last 6 months at our Nantwich Store

Insurance/Warranty is arranged by Ableworld UK Ltd and provided through Mark Bates Ltd t/a Premier Care, Premier House, Londonthorpe Road, Grantham, Lincs, NG319SN who are authorised and regulated by the Financial Conduct Authority. FRN308390.

Calls made to this number may be recorded for monitoring and quality purposes

Further details on all our stores can be found on: www.ableworld.co.uk

QUIZTIME

WELCOME TO OUR QUIZ PAGE

Every month we give you new and hopefully challenging puzzles for your enjoyment.

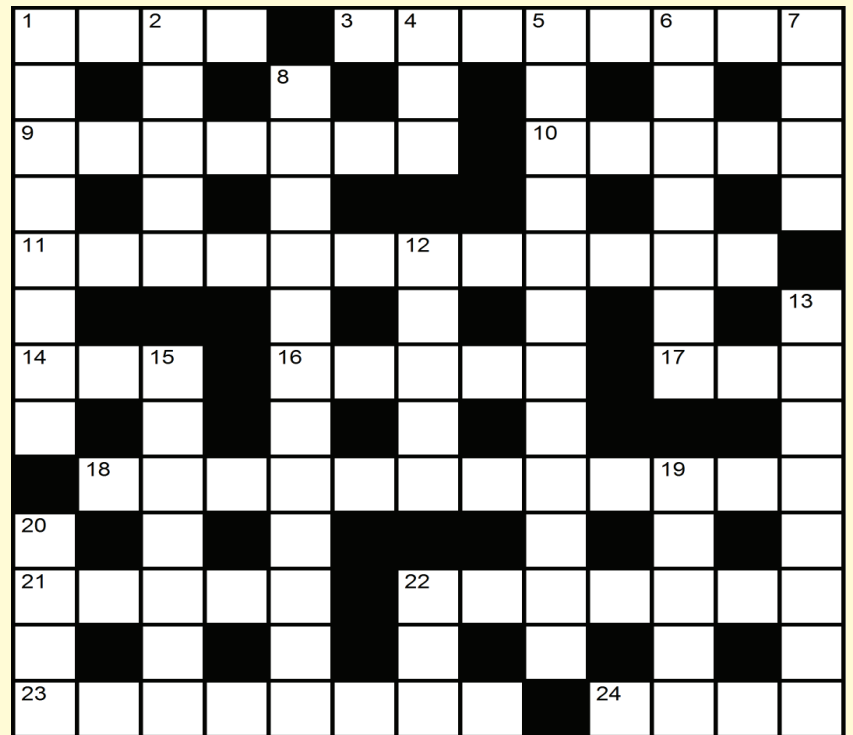
Make sure to pick up next month's issue for all this month's answers & solutions.

Wordsearch

S L N C E M L V I T Q G J R F M H
 H X T L O G A A N K P R V O Y C F
 E N Y H A O G N C I R X R S O U E
 E T M M Q F K O N E H E D U D U M
 P X J O V Y T E E A V U N S S J M
 S G B D L S V B R E H T A A D N A
 H Z R B E B T R R Y R L Y W B J Y
 E H O V R F O T R Y T M U A V F O
 A T I H A G E P S H K H G A H N U
 R L W R A N C I V O Y Q E K P B N
 I A C T O S D P P Y N Z L A K G G
 N V E R F E T H G I R W R E T E P
 G G S E R I H S K R O Y T A E R G
 B R I T I S H A R M Y B A N D T E
 D A L E S I D E B R E W E R I E S
 L L H E L E N S K E L T O N P W J
 V D N O S I R R A H Y L L O B N U

- BRITISH ARMY BAND
- COOKERY THEATRE
- COUNTRYSIDE
- CRAFT BEER
- DALESIDE BREWERIES
- EMMA YOUNG
- FOREVER TENORS
- GREAT YORKSHIRE
- HARROGATE
- HELEN SKELTON
- LIVESTOCK
- OLLY HARRISON
- PAUL HANNAM
- PETER WRIGHT
- SHEEP SHEARING

Crossword



Clues:

Across

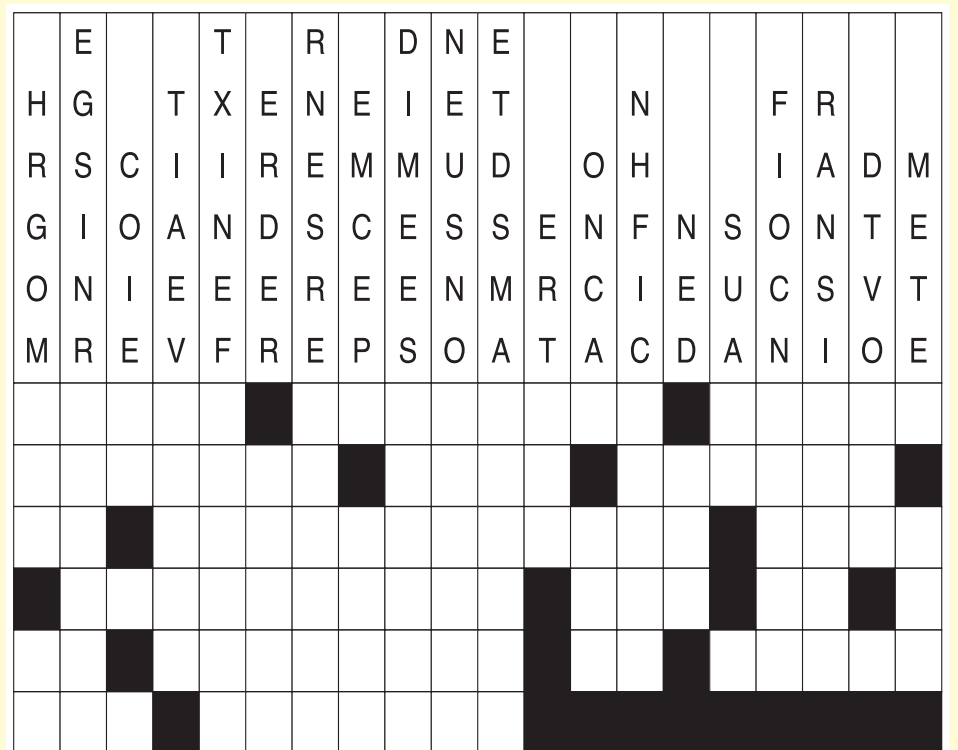
- 1 Bills, e.g.
- 3 Automated devices
- 9 Function
- 10 One of the largest rivers in Africa
- 11 Massive fuel carriers
- 14 Aged
- 16 Committee head
- 17 Sky god
- 18 Amazement
- 21 Caustic substances
- 22 Lean
- 23 Trying
- 24 Combines

Down

- 1 Medieval weapon
- 2 Brew
- 4 Chopper
- 5 Flu cloth
- 6 West African republic
- 7 Lord's worker
- 8 Impulsively
- 12 Primitive calculators
- 13 Civilizations
- 15 Send away
- 19 Terminated
- 20 Channel
- 22 Source of light

Drop Quotes

Drop Quotes are similar to cryptograms, in that the goal is for the solver to uncover a hidden quote. A black-and-white crossword-style grid is set up for each quote, with a number of letters "hovering" above each column. Your task is to "drop" each of those letters into the appropriate square in each column, until the entire quote is revealed. All punctuation (commas, periods, dashes, etc.) has been removed. Good luck!



HOW MUCH INFO HAVE YOU RETAINED?

Can you answer these questions about articles in this edition?

1 - How much can training an individual dentist cost?

4 - How many households in the UK have pets?

2 - How much has The Woodland Trust spent in the past year on invasive plant control?

3 - Who are set to play Halifax - Victoria Theatre on Friday 28th June?



WIN A SELECTION OF YORKSHIRE PIN BADGES FROM THE GREAT YORKSHIRE SHOP - P27

Sudoku

Just like a regular 1-9 puzzle, only this time using the letters A-L in a 12x12 grid. Good luck!

May edition answers

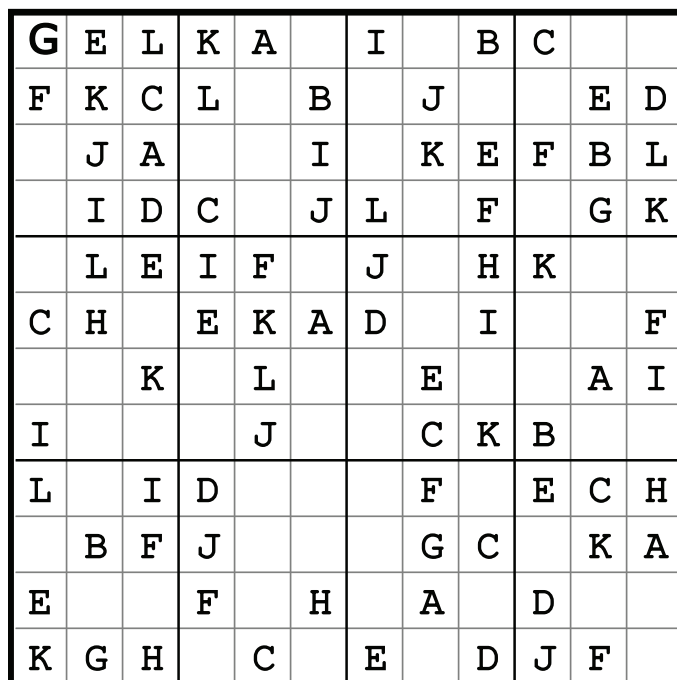


How Much Info Have You Retained answers;

- 1. Northern Powergrid 2. Over a million
- 3. Saturday 25th May 2024 4. 170,000

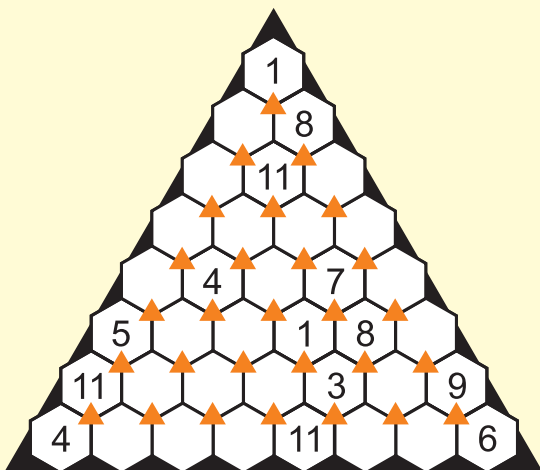
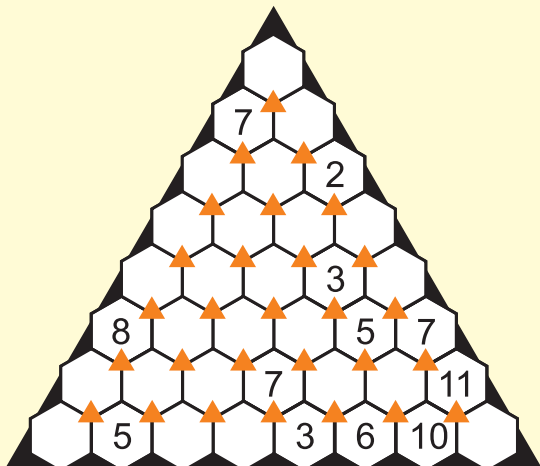
Drop Quote Answer;

A man should not strive to eliminate his complexes, but to get into accord with them; they are legitimately what directs his conduct in the world



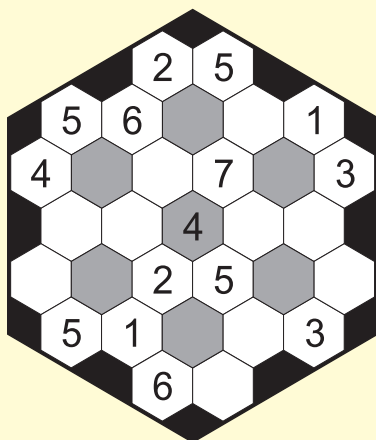
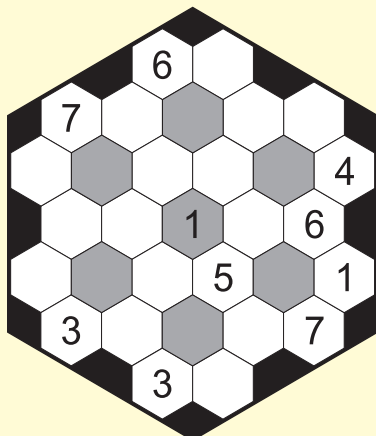
Subaddo 3D

Each orange triangle connects a set of three numbers. Two numbers must add or subtract to equal the third. All numbers must be between 1 and 12 and no number can be repeated in a horizontal row or diagonal row.



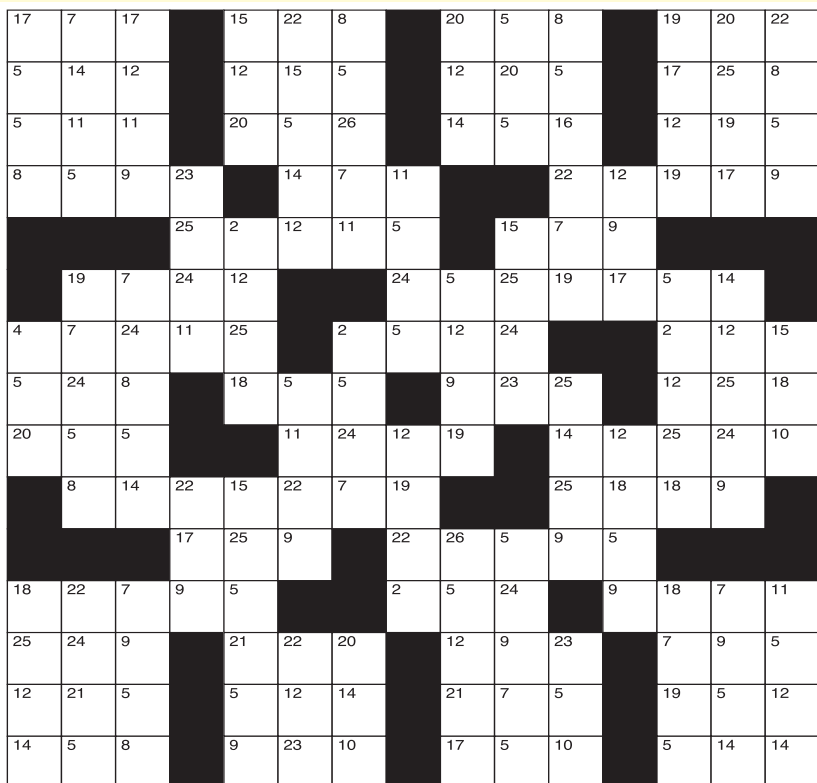
Rosetta

Fill in all 7 Rosettas with each number between 1 and 7 in no particular order while also ensuring that no number is repeated in a horizontal row and each number from 1 to 7 are represented in the 7 grey colored hexagon cells



Clueless Crossword

Think of a Clueless Crossword as a mix between a regular crossword puzzle and a cryptogram. Unlike many crossword puzzles, this grid is filled only with common, everyday English-language words - no abbreviations or other special "crossword" spellings are allowed. Each square in the grid is numbered 1 through 26, and each number corresponds to one (and only one) letter in the alphabet. Your goal is to completely fill in the crossword grid by gradually uncovering the letter that belongs to each number. We've given you three "giveaway" combinations - fill those into the solution grid and into any corresponding boxes in the crossword grid to get started. It helps to cross out each letter in alphabet as you use it in the grid, since no letter can be used more than once. Note that not all letters of the alphabet may be used in any given puzzle. If a number isn't used in the puzzle, it is greyed out in the solution grid.



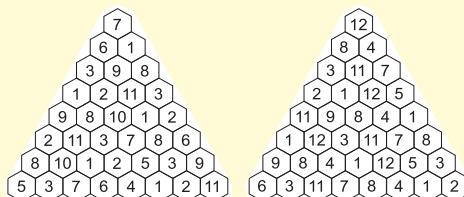
SOLUTION GRID

1	2	3	4	5	6	7
N/A		N/A			N/A	
8	9	10	11	12	13	14
					N/A	
15	16	17	18	19	20	21
22	23	24	25	26		

GIVEAWAYS

#17 = H	A	B	C	D	E	F	G
#11 = G	H	I	J	K	L	M	N
#19 = T	O	P	Q	R	S	T	U
	V	W	X	Y	Z		

May edition answers



WIN A SELECTION OF YORKSHIRE PIN BADGES FROM THE GREAT YORKSHIRE SHOP*

The Great Yorkshire Shop hand pick fine goods exclusively from local independent makers, artists and designers of Yorkshire including cards, gifts, foods, art, homeware, beauty and men's products.

All are unique items not found on the high street!

www.thegreatyorkshireshop.co.uk



THE GREAT YORKSHIRE SHOP

To enter go to page 26 and answer the 'How much info have you retained' questions then;

Simply send your answers, along with your contact details including tel number to competitions@yorkshirereporter.co.uk

THE WINNER TO COLLECT IN PERSON

The Great Yorkshire Shop,
The Concourse, Leeds Corn Exchange,
Call Lane, Leeds, LS1 7BR

Tel 0113 524 63 83

Terms & Conditions – Entries must be in by the 23rd June 2024. The winner will be contacted by phone or email and may be required for a photoshoot of them receiving their prize. Yorkshire Reporter's decision is final and no cash alternative will be offered.

WIN £25 TO SPEND AT HOBBY SHOP

THE YORKSHIRE REPORTER HAS A £25 VOUCHER TO SPEND INSTORE AT HOBBY SHOP CROSSGATES TO GIVEAWAY

To enter simply send 'HOBBY SHOP' along with your contact details including tel number to

competitions@yorkshirereporter.co.uk

Terms & Conditions – Entries must be in by the 23rd June 2024. The winner will be contacted by phone or email and may be required for a photoshoot of them receiving their prize. Yorkshire Reporter's decision is final and no cash alternative will be offered.

MAY EDITION COMPETITION WINNERS

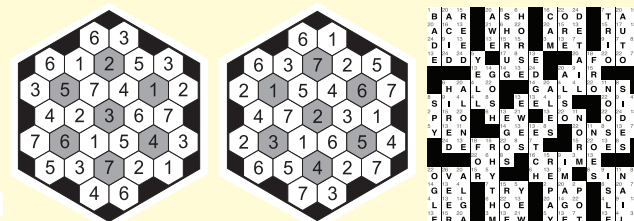
The Great Yorkshire Shop competition - Alan Walker

Red Hot Chilli Pipers & Dancers tickets - Tracy Kenny

Classic Ibiza - Leeds tickets - Daniel Fallas

Living With Dogs book - Susan Cooney

Congratulations!





Monthly Horoscopes By Russell Grant

ARIES March 21st - April 20th

As the month begins, get back in touch with someone who is waiting to hear from you. They will be delighted to receive your message. Exploring greener pastures on the 4th will make for a welcome change. The New Moon on the 6th marks the start of a chapter of chat, gossip, communication and information. You will enjoy visiting exotic places that have a foreign flavour. The 13th is a good day to study for a test or examination. It won't be a good idea to take the financial advice of a friend too seriously on the 16th. Their ideas on how to economise are likely to be unrealistic and impractical. Upheavals can be offset by diplomacy on the 20th. The Full Moon on the 22nd will bring the full consequences of decisions and actions made earlier in the month.

TAURUS April 21st - May 21st

The New Moon on the 6th makes this a good time for going over finances and expense sheets and catching up on paperwork. Be certain to keep an eye on the performance and conduct of partners, both in business and romance on the 8th. Someone will be acting in a way that might give you a bad name. Your finances will get a boost from investment returns or from commission on business earnings on the 15th. This will allow you to pay off any debts still hanging round your neck. Seek new sights on the 22nd when the Full Moon makes you restless and longing for a change of scenery or activity. Getting involved in neighbourhood issues will make you a local celebrity on the 29th. Joining forces with others to support a good cause will be empowering.

GEMINI May 22nd - June 21st

You might wish you could look into the future when the New Moon on the 6th brings a selection of options. You have an important decision to make and you can only do this by weighing the pros and cons of the situation. You will be drawing a lot of attention to yourself on the 13th even though it is not your intention to do so. You just seem to have a magnetism that attracts other people to you. Your captivating personality will impress people in a test or interview situation on the 15th. Don't hesitate to promote your past achievements. Fees for regular services and activities have rocketed. The Full Moon on the 22nd warns you to check bank statements as some suppliers will have increased direct debits without having informed you about it. An argument over finances will at least clear the air on the 28th.

CANCER June 22nd - July 23rd

Put prejudices to one side on the 6th as the New Moon prompts you to keep an open mind. The more eccentric and unlikely a scheme sounds, the more likely it is to prove profitable. It will be easier to promote your own interests from behind the scenes on the 11th. At times it will seem like the more significant events are taking place in the background. A rival who likes to be in the lead will be missing out on the best opportunities. You aren't being fair to a partner or close friend by ignoring their feelings on the 22nd. If they want to talk, get it over with. Besides, the Full Moon warns that being in a bad mood all the time will drain your energy. Hosting a party will be fun on the 29th when guests invited to your home will appreciate your company and hospitality.

LEO July 24th - August 23rd

The 1st will bring a series of changes that should enable you to expand your horizons. Block out any thoughts you may have about remaining as you are. Whether it is through study, travel or teaching, this is a time of movement and personal growth. The New Moon on the 6th will bring some happy news that gives you and your family something special to celebrate. An overly direct approach will have adverse consequences on the 11th. Do your best to avoid head on confrontations. It will be annoying to have to attend a meeting or interview arranged at the last minute on the 16th but the results will be worth any inconvenience. The Full Moon on the 22nd suggests you have a stretch of old fashioned hard slog to look forward to. A journey on the 29th will give you a chance to see how the other half lives.

VIRGO August 24th - Sept 23rd

Efficiency gets the job done on the 1st. You won't stop until you get results and this is how you will make significant headway with an ambitious project. Don't be surprised if you are offered a promotion on the 4th. This could bring a change in duties and responsibilities but it won't take long for you to adapt to new circumstances. Intuitively you will be drawn to specific people, areas and activities on the 6th when the New Moon gently pushes you to follow your instincts. You will be reminded on the 14th that you don't have to spend all your time on work, responsibilities and the serious side of life. The influence of a new friend or partner on the 16th will have extremely positive results. The Full Moon on the 22nd warns that friendships will suffer if you aren't willing to nurture them.

LIBRA Sept 24th - Oct 23rd

Visiting nearby places of historic interest will curb your restless spirit on the 4th. Meeting up with an adventurous friend on the 5th will make you curious about the world and keen to look into travel possibilities. Whether in the home or the workplace, the New Moon on the 6th makes this a good time for finding compromises. Anyone linked with home, property and domestic matters will be incredibly cooperative on the 17th. Choose this date to ask for some special favours. Instead of waiting for other people to make decisions, the Full Moon on the 22nd pushes you to take the initiative. Doing so will give you a sense of liberation. You won't want to turn down the chance to take part in a group related exercise on the 29th. It will be fun to team up with someone who has very different skills. You will learn a lot from each other.

SCORPIO Oct 24th - Nov 22nd

You will feel more confident about getting plans for the future underway on the 6th when the New Moon inspires you to get going on these. Your days, at the start of June, can be as glorious as you want them to be. Whatever your circumstances, you will find something to be happy about. With this positive attitude, your blessings will multiply and grow. Relationships with workmates, your boss or a senior colleague can be improved or cemented on the 13th. Think about inviting them to your home for a meal or a drink or arrange a casual get together away from your workplace. It will be hard work but fun to take on a challenge from a rival on the 17th. You won't get a lot of chances to relax and the Full Moon on the 22nd tempts you to treat yourself to some naughty extravagance, and why not? Don't you deserve it?

SAGITTARIUS Nov 23rd - Dec 21st

Joint arrangements on the 1st will inspire you and a partner to build something of lasting value, together. Whether this is a new home, a business plan or a joint creative project is immaterial. What's important is that you are creating something you will both enjoy. At the same time as the New Moon on the 6th you will find it easier to get on the same wavelength as others who are involved in important discussions, negotiations and transactions. Spending on social pleasures will be unnecessarily high on the 16th. Set a spending limit beforehand. Romance too could prove costly at this time. There will be some awkward moments on the 22nd if financial arrangements were not agreed on earlier when the Full Moon brings some money related tension. You might think about exploiting a creative talent to make money as the month ends.

CAPRICORN Dec 22nd - Jan 20th

If you want to get ahead on the 6th the New Moon prompts you to get your head down and completely ignore someone who tries to distract you. Completing work ahead of schedule on the 11th will make you the envy of your rivals. On the 16th, there will seem to be nothing but questions, more questions and no answers. You will admit that figuring out the best solutions is for someone who has more experience than you and you will happily support a talented leader. Changes and upheavals will knock your schedule for six on the 22nd when the Full Moon causes some chaos and confusion. Before getting angry, consider whether old routines may have needed a shake-up. This is your chance to settle into a happier pattern. A partner will need your encouragement on the 29th when they are thinking of trying something they have never done before.

AQUARIUS Jan 21st - Feb 19th

You've focused a lot on other people's needs. The New Moon on the 6th reminds you that being kind to yourself does not make you selfish. Start doing things that make you feel happy too. If a job you have always wanted becomes available on the 9th, be sure to apply. Update your cv and prepare work samples to be reviewed during an interview. Invest in a smart business suit. A project that is your brainchild will get the green light on the 17th. Celebrate with your nearest and dearest. Inside information gives you an unfair advantage over your competitors under the Full Moon on the 22nd. How you use this will be entirely up to you. Regular exercise, eating nutritious food and getting enough sleep will all help towards improving your health on the 29th. Treat your body with gentle respect.

PISCES Feb 20th - March 20th

Expect to feel a strong desire to transform your domestic environment in some way on the 6th when the New Moon inspires you to get started on a home improvement project. Take this opportunity to redecorate your living room, bedroom or kitchen. Create a colour scheme that invites relaxation and happiness. A change of scenery or surroundings on the 13th will have an invigorating effect. Dealings with estate agents, landlords and other parties involved in property will go well on the 21st. This is a good time to engage builders or maintenance people for work that needs doing in your home. The long-term prospects of a group project are significantly blurry that the Full Moon on the 22nd will bring some tough decisions. A plan needs to be made and people need to stick to it. Both in the home and the workplace, your creativity will be a decided asset on the 29th.



Arts & Flowers

Flowers For All Occasions



❁ Birthdays

❁ Weddings

❁ Births

❁ Anniversaries

❁ Gifts

❁ Thank you

❁ Congratulations

❁ Funerals

Deliver a smile to someone with Arts and Flowers Leeds online flower shop. Whatever the occasion, whether it's a birthday, an anniversary or a just a loving gesture to say thank you, we have the perfect flowers and gifts to send. Flowers can be delivered on the same day or with next day delivery. Fresh flowers hand delivered by US a real local florist!

Leeds Same Day Contactless Flower Delivery please order by 2pm

25 Austhorpe Road, Crossgates, Leeds, LS15 8BA

Tel: 0113 260 5249

Email: shop@artsandflowers.co.uk

www.artsandflowersleeds.co.uk

SHOWROOM OPEN 6 DAYS A WEEK
BY APPOINTMENT ONLY

creative of Garforth

designed
with your
home
in mind

KITCHENS

BATHROOMS

BEDROOMS

TILES

FLOORING



Call Andy for free design & quote on:
0113 28 71 800 or 07907 394 351
www.creativeofgarforth.co.uk

7 Main Street, Garforth, Leeds LS25 1DS

PUBLIC NOTICE

TOWN AND COUNTRY PLANNING (DEVELOPMENT MANAGEMENT PROCEDURE) (ENGLAND) ORDER 2015 NOTICE UNDER ARTICLE 13 OF APPLICATION FOR PLANNING PERMISSION

Proposed development at: **119 DEAN PARK DRIVE, DRIGHLINGTON, BRADFORD, W YORKSHIRE, DRIGHLINGTON, BD11 1AW.**

Take notice that application is being made by:
MR ALEXANDER DEVLIN

For planning permission to: Retrospective Application for change of use of land to form domestic curtilage within fencing. Local Planning Authority to whom the application is being submitted: Leeds City Council Local Planning Authority address: Merrion House, 110 Merrion Centre, Leeds Any owner of the land or tenant who wishes to make representations about this application, should write to the council within 21 days of the date of this notice.

SIGNATORY: MR ALEXANDER DEVLIN
DATE: 31/05/2024

Statement of owners' rights: The grant of planning permission does not affect owners' rights to retain or dispose of their property, unless there is some provision to the contrary in an agreement or lease.
Statement of agricultural tenants' rights: The grant of planning permission for non-agricultural development may affect agricultural tenants' security of tenure.
'Owner' means a person having a freehold interest or a leasehold interest the unexpired term of which is not less than seven years.
'Tenant' means a tenant of an agricultural holding any part of which is comprised in the land.

**West Yorkshire's
Biggest FREE To
Pick Up Independent
Newspaper**

ANIMAL REHOMING



**Cats and Kittens Looking
For Safe caring homes
in quiet areas away from
busy roads, we also help
with feral and stray /
Injured Cats**

Contact us on
0113 218 82 62 / 07759 23 66 28

or email us at;
raffertypick@btinternet.com

Registered charity no 801245 www.cat77.org.uk

AUTOMOTIVE



**VW AUDI
SEAT & ŠKODA
SPECIALISTS**

Yorkshire's independent
VW AUDI SEAT & ŠKODA Centre



www.ivcleeds.co.uk
Tel: 0113 276 5951/52
16 Pontefract Road
Leeds LS10 1TB

CLEANING



- One off or regular cleans
- Deep cleans
- Appliance cleaning
- Internal windows & frames
- Packages available tailored to suit

Contact Terri at; *FULLY INSURED AND VALID DBS*
☎07484 79 00 92 ✉pcs2813@outlook.com

**Thinking of promoting
your business or need a
Public Notice?**

Contact us for our competitive rates;
advertising@yorkshirereporter.co.uk or
Tel: 0113 51 333 56 / 07850 28 51 95

DOUBLE GLAZING REPAIRS



**STEAMY
WINDOWS**
DOUBLE GLAZING REPAIR

**Specialists in
Replacement Double
Glazed Units**

Ring with Sizes for a FREE Estimate

**0113 335 0576
0800 328 8573**

8am to 8pm 7 days

www.steamywindows.net

Established Local Family
Company

**Glass and
Glazing Experts**

- Broken and Cracked Glass • Misted Units
Replaced • Boarding Up Service
• Windows/Door Glass • Safety/Security Glass
• Fire Rated Glass • Picture Glass
• Greenhouse Glass • Mirrors • Coloured
Splashbacks • Stained Glass

COMMERCIAL & DOMESTIC PROPERTIES

**Leeds
Glass**

0800 996 1168

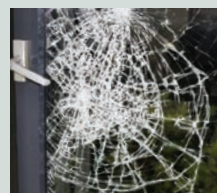
www.leedsglass.co.uk



Leeds Glass Windows Ltd 401A York Road Leeds LS9 6TD
T: 0113 248 8433 / F: 0113 248 1649 / E: info@leedsglass.co.uk



Glass cut to size
while you wait



Emergency Rapid
Response Glazing

FUNERAL SERVICES

**CITY OF LEEDS
— FUNERAL SERVICES —**

Serving Leeds and all surrounding districts



A FUNERAL FOR EVERY BUDGET

DIRECT FUNERAL SERVICE	AFFORDABLE FUNERAL SERVICE	SIMPLE FUNERAL SERVICE	TRADITIONAL FUNERAL SERVICE
£1150	£1425	£1625	£1775
<ul style="list-style-type: none"> ☑ Coffin ☑ Crematorium Fees ☑ Doctor's Fees (no attendance) 	<ul style="list-style-type: none"> ☑ Funeral Director's Fees ☑ Coffin ☑ Service to take place in our service chapel followed by private cremation. ☑ Crematorium Fees ☑ Doctor's Fees ☑ Minister/Celebrant Fees 	<ul style="list-style-type: none"> ☑ Funeral Director's Fees ☑ Hearse ☑ Coffin ☑ Crematorium Fees ☑ Doctor's Fees ☑ Minister/Celebrant Fees 	<ul style="list-style-type: none"> ☑ Funeral Director's Fees ☑ Hearse ☑ One Limousine ☑ Coffin ☑ Crematorium Fees ☑ Doctor's Fees ☑ Minister/Celebrant Fees
☑ Online, interactive obituary to share with family and friends			

We are able to offer a sympathetic **Funeral Service** to your loved one at an affordable price that we hope will enable you to make arrangements without the worry of inflated prices.

For further information or advice please contact

0113 260 8467

✉ admin@cityofleedsfuneralservices.co.uk
🌐 www.cityofleedsfuneralservices.co.uk

DWP Claims catered for

**AVAILABLE FROM
OVER 500 OUTLETS
EVERY MONTH**

FUNERAL PLANS FROM

Kettley's
Aireborough & Wharfedale Funeral Service

Finance Available

**Act now
for one less
thing to worry
about.**

YOUR WISHES,
YOUR WAY



**Request your
free information
pack today:**

Golden Charter

☎ 0113 250 3716

🌐 kettleysfuneralservice.co.uk

✉ kettleysfuneralservice@gmail.com

Head Office 35-39 Ivegate, Yeadon, Leeds LS19 7RE

GAMING



We Buy, Sell & Trade Consoles & Games

- New & Pre-Owned Games
- Consoles
- DVD's & Blu-Rays
- Collectibles
- Controllers & Headsets
- Gaming Accessories
- Action Figures
- iPhone Screen Repairs



381 Harehills Lane, Leeds LS9 6AP

MON - FRI 10am - 5pm & SAT 10am - 4pm

Tel: 0113 240 35 95

TREE SURGEON

Local Tree Services



COMPLETE TREE & GARDEN SERVICES

TREES - Felled - Topped - Pruned - Shaped - Sprayed

HEDGES - Trimmed - Topped - Shaped - Removed

SHRUBS - Trimmed - Re-shaped - Removed - Ivy Cleared

Jet Washing

PATIOS / DRIVES
SAND & SEAL



FOR PROFESSIONAL ADVICE & FREE QUOTATION

Tel 07587 223 103

PAINTING & DECORATING

Interior & Exterior Painter and Decorator

Over 40 Years Experience



Tel 0113 270 33 95
Mobile 07778 103 741

ROOFERS



ST ROOFING & MAINTENANCE SERVICES LTD

- » Roof Repairs
- » Re-Roofs
- » GRP & EPDM flat roofs
- » Fascia & Soffits
- » Guttering
- » Leadwork
- » Pointing
- » Painting (Exterior)

t: 0113 294 50 97 / 07895 00 46 59

e: info@stroofingandmaintenance.co.uk

w: www.stroofingandmaintenance.co.uk



ROOFERS

RIGHTWAY ROOFING & HOME IMPROVEMENTS

FREE QUOTES - NO DEPOSITS - ALL WORK GUARANTEED - FULLY INSURED

- NEW ROOFS • TILE OR SLATE • ROOF REPAIRS • RIDGE TILES • CHIMNEYS • DRY VERGE SYSTEMS • RENDERING
- UPVC FACIAS & SOFFITS • GUTTERING • EXTERIOR PAINTING • JOINERY WORK • PEBBLE DASHING • RUBBER & FELT ROOFING



TELEPHONE: 0113 834 97 73 MOBILE: 07748 36 59 18

EMAIL: RIGHTWAYROOFING111@GMAIL.COM



Promote Your Business in 1 or more of our titles



There are many options available for businesses to advertise with a variety of packages and a bespoke free design service if required.

Prices start from £45.

To advertise in one or both editions of the Yorkshire Reporter or @yourfingertips

Contact;
Tel **0113 51 333 56** or Brian on **07850 285 195**

or email; advertising@yorkshirereporter.co.uk





MOBILITY COMFORT



Cant come to us? We can come to you, In home Demonstration service available



Lift & Tilt Chairs

Various Size Options

Adjustable Beds

Extra Discount Voucher

£100 OFF

Any purchase of a Lift and Tilt Recliner Chair Or Adjustable Bed
one voucher per customer only

Discount cant be used in conjunction with any other offer

*Super Fast Delivery Available on Lift & Tilt Chairs within **7 Days**

*Selected Fabrics

VAT Exemption available on adjustable beds and lift and tilt chairs

saso.co.uk | 01977 559979 | Calder House Savile Road, Castleford WF10 1BJ | FREE PARKING

Open : Mon - Sat 8:30am - 5pm Closed Sunday & Bank Holidays